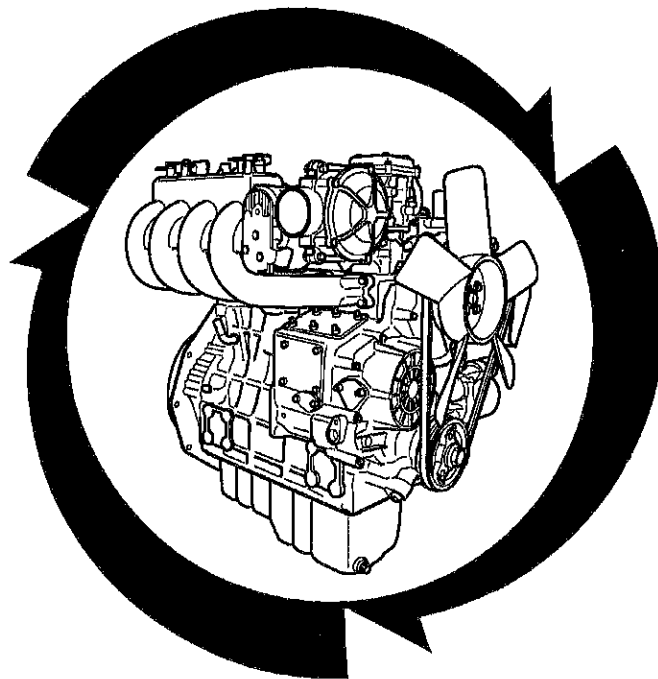


ILLUSTRATED PARTS LIST

KUBOTA

WG1605-L-E3-PBS-1

GAS ENGINE



Kubota

97898-79910

JUL. 2012

NOTICE

This Parts List is for the following purposes

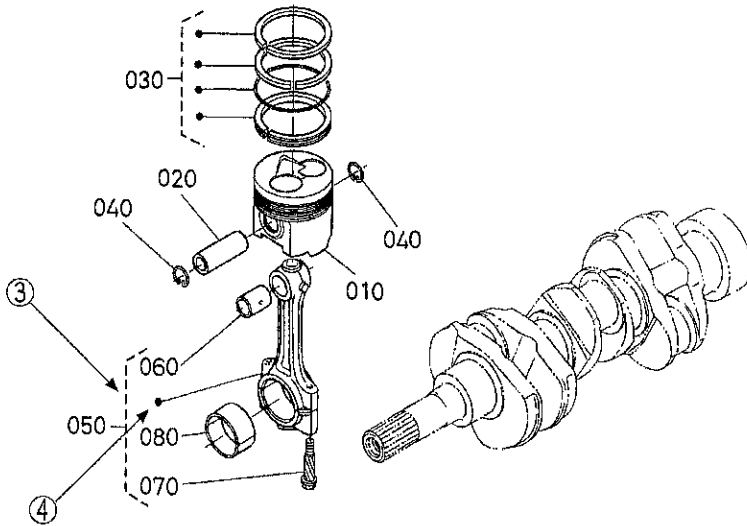
- 1 When ordering parts, check with this Parts List to confirm the part number and the name of parts.
- 2 When making repairs, refer to the illustrations in this Parts List.
- 3 This Parts List is subject to change without notice.

MODEL	CODE No.
WG1605-L-E3-PBS-1	EG525-40000

INSTRUCTIONS

① ↓
② ↓
010200 PISTON AND CRANKSHAFT **{ B }**

⑩ → S.No. ; A: ≤15000, B: 14000 to 15000



REF. No	PART No.	PART NAME	Q'TY/S.No.		I.C.	REMARKS
			A	B		
010	15800-0000-0	PISTON	<=15000	<=15000		[Example-1]
010	15800-0000-2	PISTON	>=15001	>=15001		← [Example-1]
020	15800-1000-0	PIN,PISTON	<=15000	<=15000		
020	15800-1000-2	PIN,PISTON	>=15001	>=15001	≠	← [Example-2]
030	15800-2000-0	ASSY PISTON RING	<=15000	<=15000		
030	15830-2000-0	ASSY PISTON RING	>=15001	>=15001	↔	← [Example-3]

- ① Fig. No. Represents No. corresponding to each group name.
- ② Specifications The types and destinations of sister models are indicated. These indications are given to tell their relevant pages in this book.
The symbols, (EC) (UK) (SE) and (ITA) in the "REMARKS" column or "HEADING" show the models as to the following types.

(SYMBOL)	(TYPE)
(EC)	M8540DTHC(4WD)/M9540DTHC(4WD) EUROPE SPEC.
(UK)	M8540DTHC(4WD)/M9540DTHC(4WD) UNITED KINGDOM SPEC.
(SE)	M8540DTHC(4WD)/M9540DTHC(4WD) SOUTHERN EUROPE SPEC.
(ITA)	M8540DTHC(4WD)/M9540DTHC(4WD) ITALY SPEC.
(G-PTO)...	GROUND PTO SPEC.
(DS)	DUAL SPEED SPEC.

- ③ Components The components of an assembly are identified by a bracket of dotted lines.
- ④ Point Indicates that the parts is not sold independently.
The assembly (Ref.No.050) containing the part needs to be ordered.
- ⑤ REF. No. Reference numbers are assigned to parts in the illustration. The code number of a part in the illustration can be identified by referring to the same reference number in the parts list.
- ⑥ Model name The name of the basic model is indicated in this column. Other applicable models are indicated on the "REMARKS" column ⑨.
A LINE M8540DTHC(4WD) EUROPE, SOUTHERN EUROPE and ITALY SPEC.
B LINE M8540DTHC(4WD) UNITED KINGDOM SPEC.
C LINE M9540DTHC(4WD) EUROPE, SOUTHERN EUROPE and ITALY SPEC.
D LINE M9540DTHC(4WD) UNITED KINGDOM SPEC.
- ⑦ S. No. Indicates a group of serial numbers to which a design change is applied.
(serial No.)

Engine Serial No.

8 7 J 0001
8 7 K A001

Lower 4 digits in Numerals or Alphabetical letter (A to Z) and Numerals (start 0001 to max Z999).

5th digit Alphabetical letter (Month of manufacture).

Month	1	2	3	4	5	6	7	8	9	10	11	12
	A,B	C,D	E,F	G,H	J,K	L,M	N,P	Q,R	S,T	U,V	W,X	Y,Z

6th digit Numerals or Alphabetical letter (Year of manufacture).

Year	1998	1999	2000	01	02	03	04	05	06	07	08	09	10	11
	W	X	Y	1	2	3	4	5	6	7	8	9	A	B
Year	12	13	14	15	16	17	18	19	20	21	22	23	24	25
	C	D	E	F	G	H	J	K	L	M	N	P	R	S

7th digit Numerals or Alphabetical letter (The factory line identifying).

Identifying	1	2	3	4	5	6	7	8	A	B
-------------	---	---	---	---	---	---	---	---	---	---

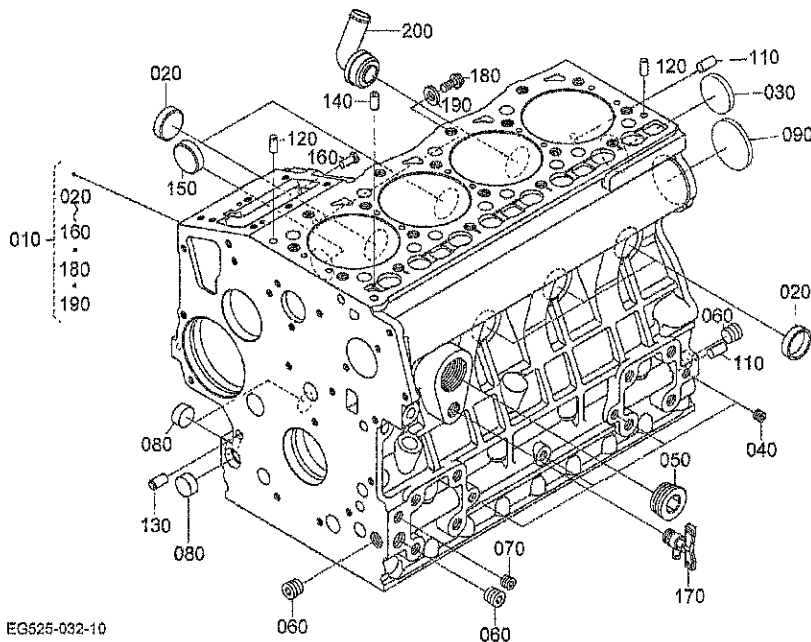
- ⑧ I. C. Indicates the interchangeability of parts due to design change.
(Interchangeability)
- Example-1 ← indicates that a new part can replace an old part, but not vice versa.
15800-0000-0 is applicable to the first serial number to S. No. 15000.
15800-0000-2 is applicable to the first serial number and above.
- Example-2 ≠ indicates that the new and old parts are not interchangeable.
15800-1000-0 is applicable to the first serial number to S. No. 15000.
15800-1000-2 is applicable to S. No. 15001 and above.
- Example-3 ↔ indicates that the new and old parts are interchangeable. Both 15800-2000-0 and
15830-2000-0 are applicable to the first serial number and above.
- ⑨ REMARKS 1 In this column, enter other applicable model names, dimensions and other special items.
The following symbols and abbreviations are used throughout this book.
29*12.00-15 ... Tire size sq.m ... m² sq.mm ... mm²
cu.m ... m³ cu.mm ... mm³ D ... Diameter L ... Length
W/G No. ... Whole goods number.
STD ... Standard SET ... Set sale T ... Teeth
OLD ... Old parts, old shapes or old models
NEW ... New parts, new shapes or new models
- ⑩ REMARKS 2 The following expressions are used in NOTE for each group.
Machines' serial numbers are indicated as follows.
<=15000 Serial number below 15000.
>=15001 Serial number above 15001.
14000 to 15000 Serial number 14000 to 15000.
For some models, the above expressions may also be used REMARKS 1 ⑨.
- ⑪ Fig. No. Indicates the numbers of figures for the parts that are shown in virtual images.
(virtual images) A figure numbers with XX means that there are two or more figures depending on the
sister models or the production lots.

CONTENTS

[WG1605-L-E3-PBS-1]

000100	CRANKCASE	1
000200	OIL PAN	2
000300	CYLINDER HEAD	3
000400	GEAR CASE	4
000500	HEAD COVER	5
000600	OIL FILTER	6
000700	DIPSTICK AND GUIDE	7
010000	MAIN BEARING CASE	8
010100	CAMSHAFT AND IDLE GEAR SHAFT	9
010200	PISTON AND CRANKSHAFT	10
010300	FLYWHEEL	12
020500	COVER	13
026000	SENSOR(ENGINE)	14
030200	IGNITION COIL	15
030800	SOLENOID COVER AND HYDRAULIC PUMP COVER	16
040200	ALTERNATOR AND PULLEY	17
040300	ALTERNATOR [COMPONENT PARTS]	18
040400	STARTER	19
040500	STARTER [COMPONENT PARTS]	20
040600	OIL SWITCH/THERMOMETER/PLUG	22
050000	WATER FLANGE AND THERMOSTAT	23
050100	WATER PUMP	24
050300	WATER PIPE	25
050400	COOLER FAN	26
050500	RESERVE TANK	27
060000	VALVE AND ROCKER ARM	28
060100	INLET MANIFOLD	29
060200	EXHAUST MANIFOLD	31
080100	STARTER SWITCH	32
080601	WIRE HARNESS	33
080602	WIRE HARNESS	34
080700	ECU	35
080800	ACCESSORIES AND SERVICE PARTS	36
080900	LABEL AND OPERATOR'S MANUAL	37
090001	UPPER GASKET KIT[OPTION]	38
090002	LOWER GASKET KIT[OPTION]	39
090100	METAL KIT[OPTION]	40
090300	PISTON KIT[OPTION]	41
090600	OPTION	42
091000	LOCAL PARTS	43
■	NUMERICAL INDEX	44

000100 CRANKCASE

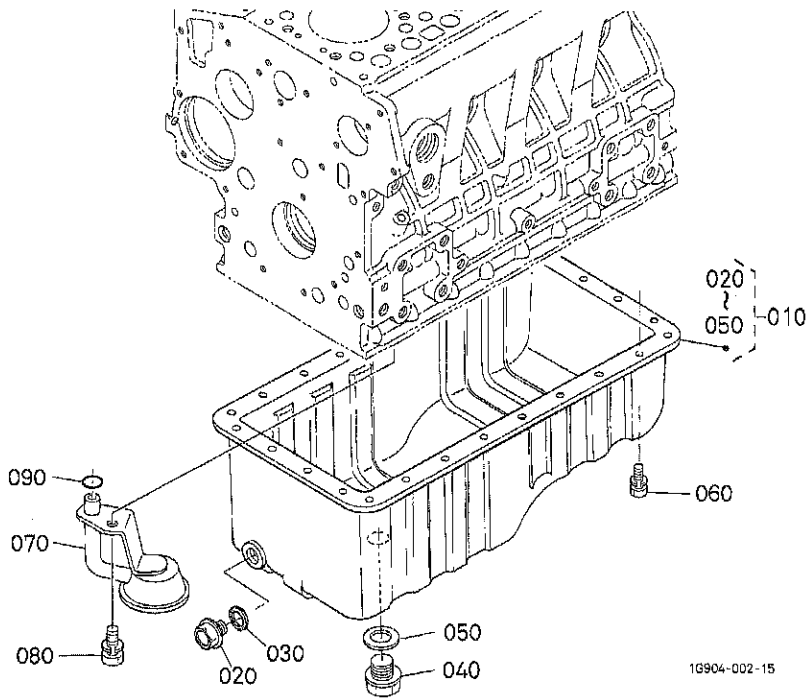


A:WG1605-L-E3-PBS-1

REF.No	PART No.	PART NAME	QTY/S.No.	I.C.	REMARKS
010	EG526-0104-0	COMP. CRANKCASE	A		
020	15451-9627-0	CAP, SEALING	5		
030	15221-0349-0	CAP, SEALING	1		
040	15261-9601-0	PLUG	4		
050	16683-9602-0	PLUG	1		
060	16241-9601-0	PLUG	3		
070	15521-9602-0	PLUG	2		
080	17391-9616-0	PLUG, EXPANSION	3		
090	16271-9616-0	PLUG, EXPANSION	1		
100	---	BLANK	-		
110	05012-00814	PIN, STRAIGHT	2		
120	05012-00610	PIN, STRAIGHT	2		
130	15231-3396-0	PIN, PIPE	2		
140	16241-3365-0	PIN, PIPE	1		
150	16241-9626-2	PLUG, FUEL CAMSHAFT	1		
160	16221-5628-0	PIN, START SPRING	1		
170	16871-7302-0	ASSY COCK, DRAIN	1		
180	01754-50610	BOLT, FLANGE	1		
190	15601-9665-0	GASKET	1		
200	EG523-7135-0	COMP. CONNECTOR(WP)	1		

↔ Interchangeable; ≠ not Interchangeable; ← new for old; → old for new

000200 OIL PAN

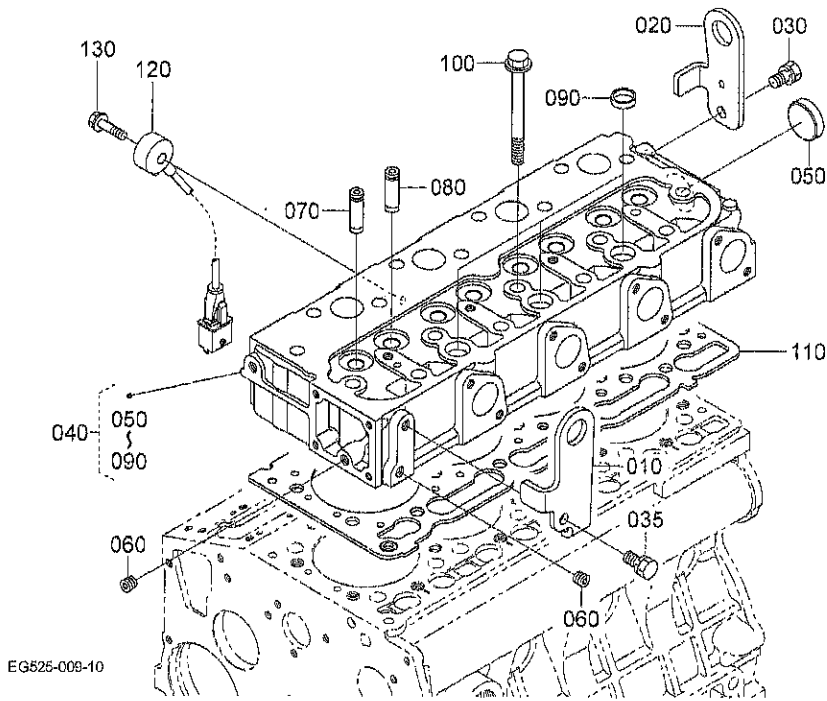


A:WG1605-L-E3-PBS-1

REF.No.	PART No.	PART NAME	QTY/S.No.	I.C.	REMARKS
			A		
010	16616-0160-0	KIT OIL PAN	1		
020	13901-3375-0	PLUG,DRAIN	1		
030	60090-5896-0	GASKET	1		
040	16286-3375-0	PLUG,DRAIN	1		
050	16265-9667-0	GASKET	1		
060	16221-9112-2	BOLT,SEMS	26		
070	16226-3211-4	FILTER,OIL	1		
080	01123-50816	BOLT,SEMS	1		
090	04814-00160	O RING	1		

↔ interchangeable; ≠ not interchangeable; ← new for old; → old for new

000300 CYLINDER HEAD

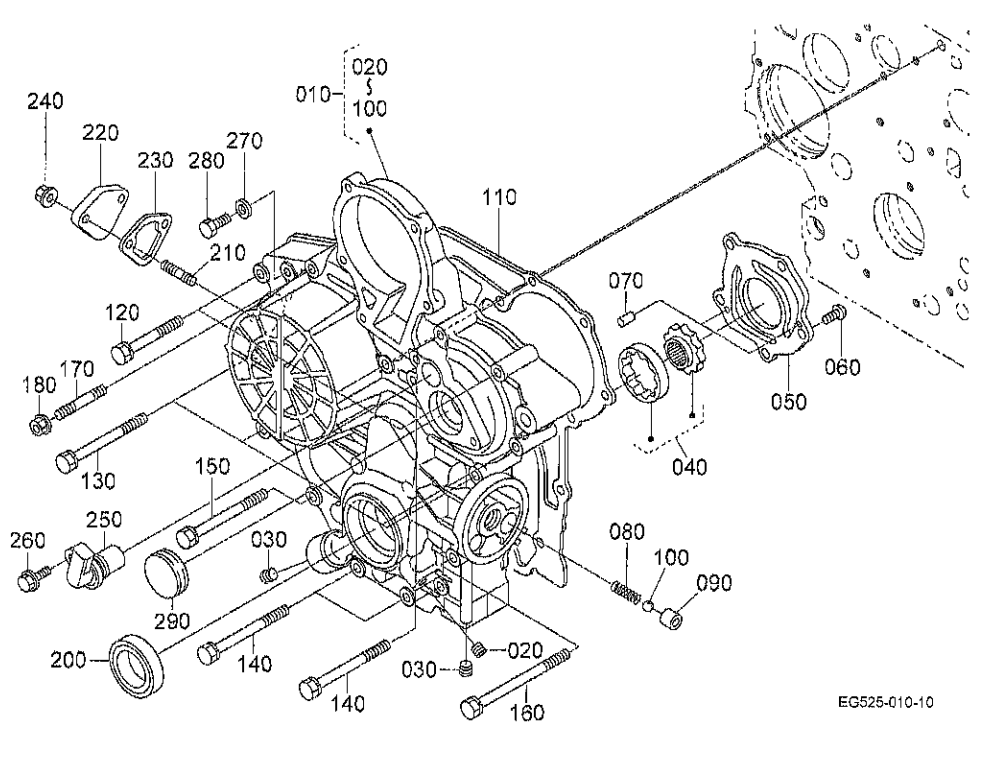


A:WG1605-L-E3-PBS-1

REF.No.	PART No.	PART NAME	Q'TY/S.No.	I.C.	REMARKS
			A		
010	EG523-0174-0	HOOK,ENGINE	1		
020	EG523-0175-2	HOOK(ENGINE,2)	1		
030	01123-50814	BOLT,SEMS	1		
035	01123-50816	BOLT,SEMS	1		
040	EG525-0304-0	COMP.CYLINDER HEAD	1		
050	15321-9626-0	CAP,SEALING	1		
060	15261-9601-0	PLUG	2		
070	16261-1354-0	GUIDE,INLET VALVE	4		
080	EG523-1356-0	GUIDE,EXHAUST VALVE	4		
090	15261-0337-0	CAP,SEALING	3		
100	16241-0345-0	BOLT,CYLINDER HEAD	10		
110	16394-0331-3	GASKET,CYLINDER HEAD	1		
120	EG523-0380-0	SENSOR(KNOCK)	1		
130	EG523-9105-0	BOLT(SENSOR,KNOCK)	1		

↔ Interchangeable; ≠ not Interchangeable; ← new for old; → old for new

000400 GEAR CASE

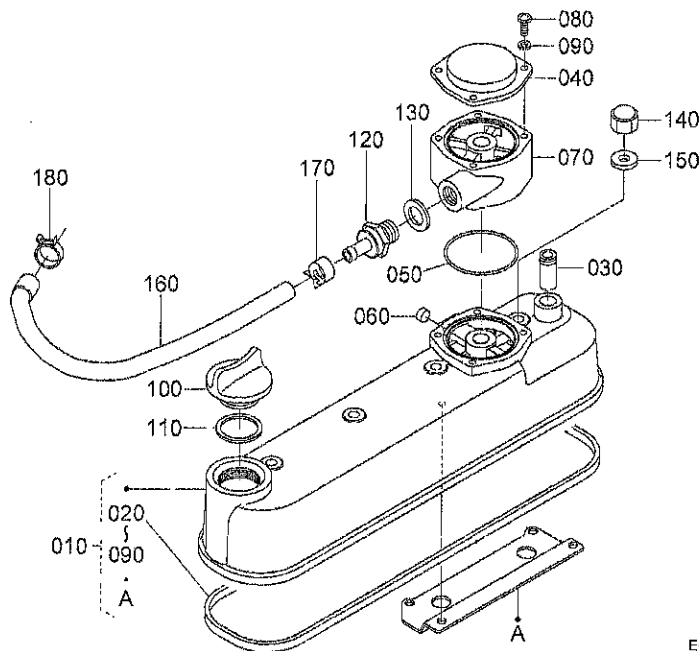


A:WG1605-L-E3-PBS-1

REF.No.	PART No.	PART NAME	QTY/S.No.	I.C.	REMARKS
			A		
010	EG522-0402-0	COMP.CASE,GEAR	1		
020	16241-9601-0	PLUG	1		
030	16261-9602-0	PLUG	2		
040	16241-3507-0	ASSY ROTOR,OIL PUMP	1		
050	16251-3513-0	COVER,OIL PUMP	1		
060	03017-50620	SCREW,BINDING(PHILLI	5		
070	05012-00410	PIN,STRAIGHT	2		
080	16241-3695-0	SPRING	1		
090	16241-3693-0	SEAT,VALVE	1		
100	07715-00201	BALL	1		
110	16264-0413-2	GASKET,GEAR CASE	1		
120	01023-50645	BOLT,SEMS	3		
130	01023-50650	BOLT,SEMS	4		
140	01023-50655	BOLT,SEMS	4		
150	01023-50665	BOLT,SEMS	1		
160	16241-9104-0	BOLT	1		
170	16245-9153-0	STUD	1		
180	02751-50060	NUT,FLANGE	1		
190	---	BLANK	-		
200	16259-0421-0	SEAL,OIL	1		
210	16245-9154-0	STUD	2		
220	15852-5285-0	COVER	1		
230	16261-5214-0	GASKET,FUEL PUMP	1		
240	02751-50060	NUT,FLANGE	2		
250	EG523-6833-0	SENSOR	1		
260	01754-50616	BOLT,FLANGE	1		
270	15601-9665-0	GASKET	1		
280	15661-9601-0	PLUG	1		
290	16264-8334-2	COVER,GEAR CASE	1		

↔ Interchangeable; ≠ not Interchangeable; ← new for old; → old for new

000500 HEAD COVER

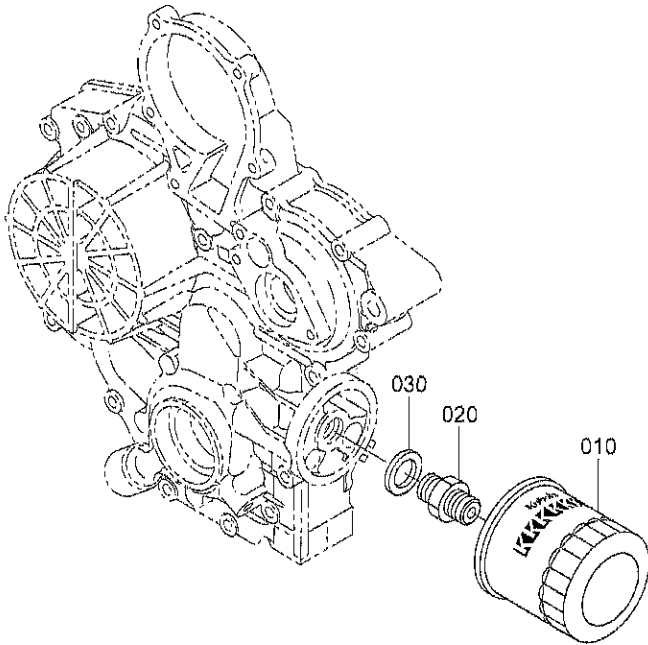


A:WG1605-L-E3-PBS-1

REF.No.	PART No.	PART NAME	QTY/S.No.	I.C.	REMARKS
			A		
010	EG523-1450-0	ASSY COVER,CYL.HEAD	1		
020	16241-1452-0	GASKET,HEAD COVER	1		
030	17331-7334-2	PIPE,WATER RETURN	1		
040	16742-0512-0	COVER,BREATHER	1		
050	1A021-0543-0	O RING,BREATHER	2		
060	15451-9630-0	CAP,SEALING	1		
070	EG523-1467-0	SPACER(BREATHER)	1		
080	03054-50545	SCREW,PAN HEAD(PHILL	4		
090	04512-50050	WASHER,SPRING LOCK	4		
100	E9151-3314-0	PLUG,OIL FILLER	1		
110	1J001-9677-0	O RING	1		
120	EG523-0545-0	VALVE,COMP(PCV)	1		
130	04724-00160	PACKING	1		
140	15952-9233-0	NUT	4		
150	15951-9666-0	GASKET	4		
160	EG523-0551-0	TUBE,BREATHER	1		
170	EG523-4275-0	CLAMP,HOSE	1		
180	16241-7336-0	BAND,PIPE	1		

↔ Interchangeable; ≠ not Interchangeable; ← new for old; → old for new

000600 OIL FILTER



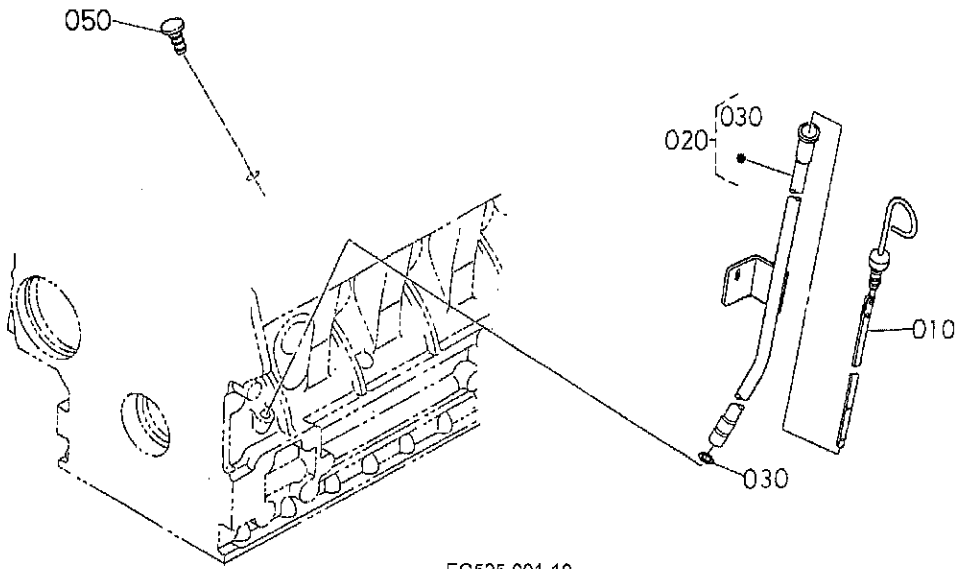
EG625-012-10

A:WG1605-L-E3-PBS-1

REF.No.	PART No.	PART NAME	Q'TY/S.No.	I.C.	REMARKS
			A		
010	HH160-3209-3	CARTRIDGE OIL FILTER	1		
020	15241-3229-0	JOINT, PIPE	1		
030	04011-50180	WASHER, PLAIN	1		

↔ Interchangeable; ≠ not interchangeable; ← new for old; → old for new

000700 DIPSTICK AND GUIDE



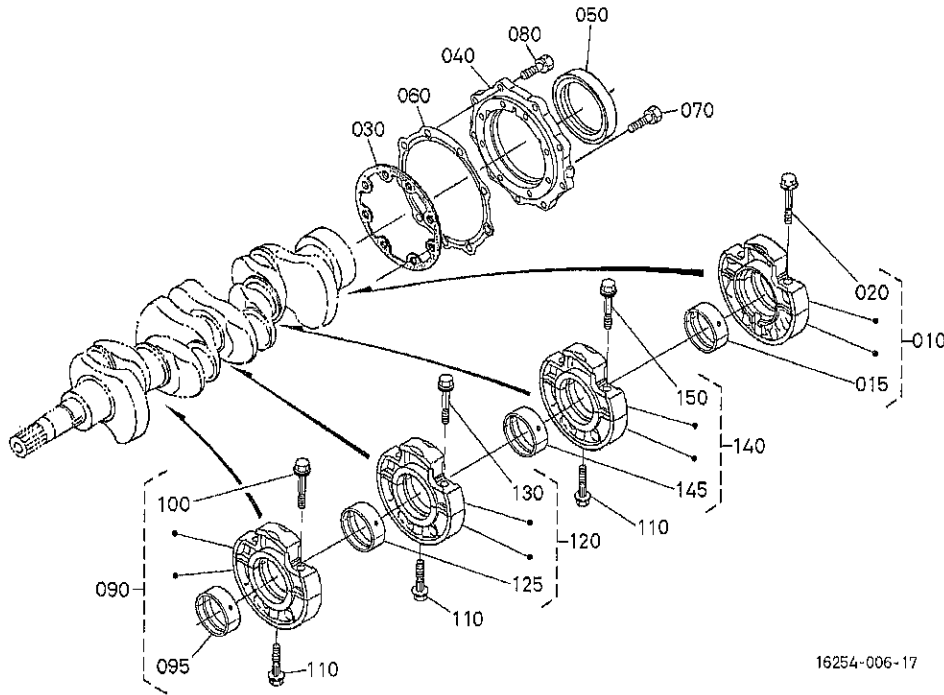
EG525-001-10

A:WG1605-L-E3-PBS-1

REF.No.	PART No.	PART NAME	QTY/S.No.	I.C.	REMARKS
			A		
010	16611-3641-3	GAUGE,OIL	1		
020	16282-3650-0	ASSY GUIDE,OIL GAUGE	1		
030	04814-00090	O RING	1		
040	---	BLANK	1		
050	16513-3655-0	PLUG,OIL GAUGE	1		

↔ Interchangeable; ≠ not Interchangeable; ← new for old; → old for new

010000 MAIN BEARING CASE



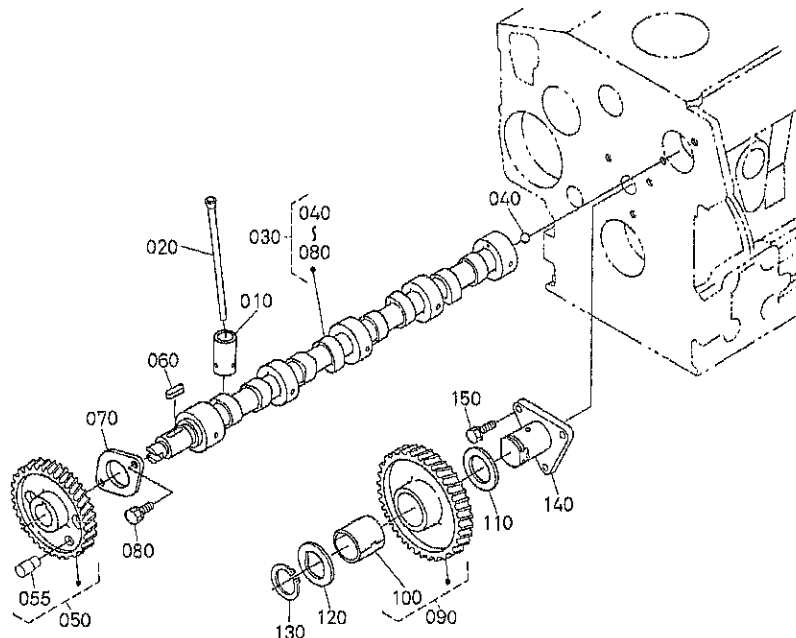
16254-006-17

A:WG1605-L-E3-PBS-1

REF.No	PART No.	PART NAME	QTY/S.No.	I.C.	REMARKS
			A		
010	16292-0709-5	ASSY BRG.CASE,WHEEL	1		
015	16292-2349-4	METAL,CRANKSHAFT	1		STD/SET
020	16241-0454-0	BOLT,BEARING CASE	2		
030	16679-0436-0	GASKET BRG.CASE	1		
040	16241-0481-5	COVER,BEARING CASE	1		
050	16285-0446-0	SEAL,OIL	1		
060	16264-0482-2	GASKET	1		
070	16679-9101-0	BOLT	8		
080	16679-9102-0	BOLT	9		
090	16292-0704-7	ASSY BRG.CASE,MAIN	1		
095	16292-2348-3	METAL,CRANKSHAFT	1		STD/SET
100	16241-0454-0	BOLT,BEARING CASE	2		
110	16241-0456-0	BOLT,BEARING CASE	3		
120	16292-0705-7	ASSY BRG.CASE,MAIN	1		
125	16292-2348-3	METAL,CRANKSHAFT	1		STD/SET
130	16241-0454-0	BOLT,BEARING CASE	2		
140	16292-0706-7	ASSY BRG CASE	1		
145	16292-2348-3	METAL,CRANKSHAFT	1		STD/SET
150	16241-0454-0	BOLT,BEARING CASE	2		

← Interchangeable; ≠ not Interchangeable; ← new for old; → old for new

010100 CAMSHAFT AND IDLE GEAR SHAFT



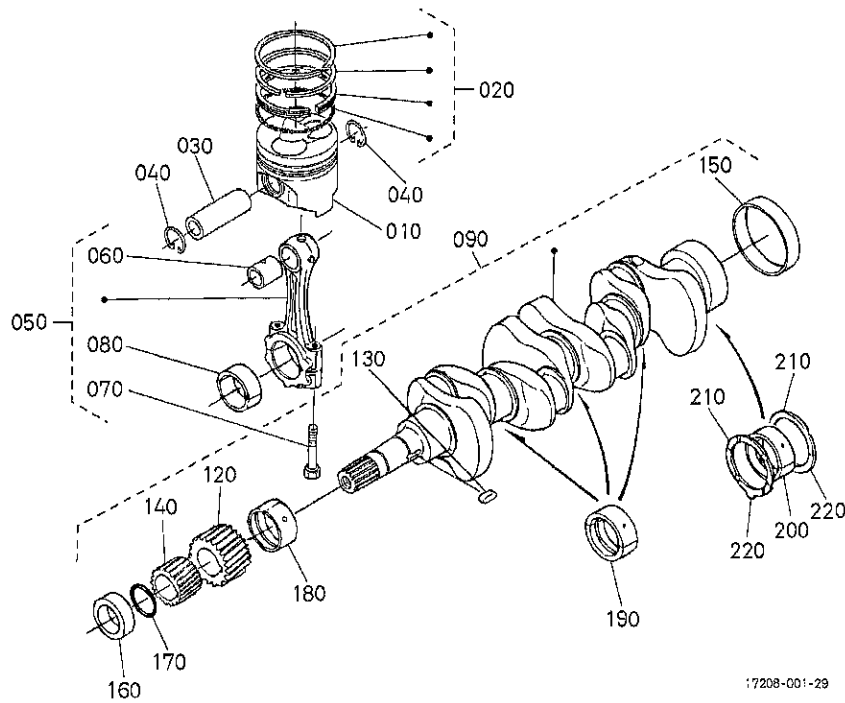
EG525-013-10

A:WG1605-L-E3-PBS-1

REF.No.	PART No.	PART NAME	QTY/S.No.		I.C.	REMARKS
			A			
010	16673-1555-0	TAPPET	8			
020	16241-1511-4	PUSH ROD	8			
030	EG523-1601-0	ASSY CAMSHAFT	1			
040	07715-00401	BALL 1/4	1			
050	EG523-1650-0	COMP.GEAR,CAM	1			
055	EG523-1693-0	PIN(CAM GEAR)	1			
060	05712-00518	FEATHER KEY	1			
070	16241-1627-0	STOPPER,CAMSHAFT	1			
080	01023-50616	BOLT,SEMS	2			
090	16271-2401-2	COMP GEAR,IDLE	1			
100	16271-2498-2	BUSH,IDLE GEAR	1			
110	16241-2436-0	COLLAR,IDLE GEAR	1			
120	16241-2437-0	COLLAR,IDLE GEAR	1			
130	16241-2432-0	CIR CLIP,IDLE GEAR	1			
140	16241-2425-0	SHAFT,IDLE GEAR	1			
150	01023-50616	BOLT,SEMS	3			

↔ Interchangeable; ≠ not interchangeable; ← new for old; → old for new

010200 PISTON AND CRANKSHAFT

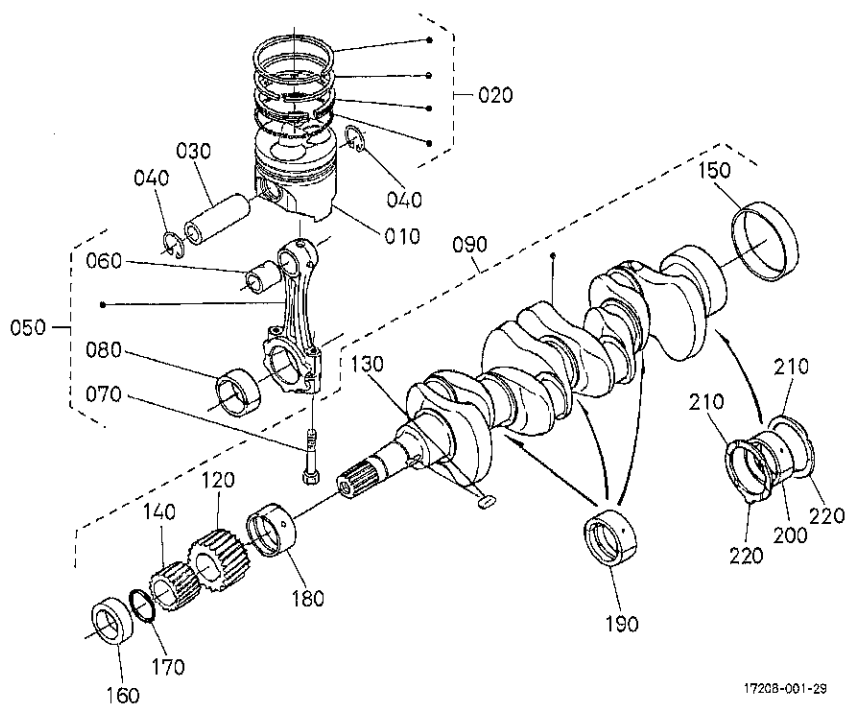


A:WG1605-L-E3-PBS-1

REF.No.	PART No.	PART NAME	QTY/S.No.	I.C.	REMARKS
			A		
010	E6523-2111-0	PISTON	4		STD
010	E6523-2191-0	PISTON	4		+0.50mm
020	E6523-2105-0	ASSY PISTON RING	4		STD
020	E6523-2109-0	ASSY PISTON RING	4		+0.50mm
030	16241-2131-0	PIN,PISTON	4		
040	16241-2133-0	CIR CLIP,PISTON PIN	8		
050	16292-2201-6	ASSY ROD,CONNECTING	4		
060	16700-2198-0	BUSH,PISTON PIN	4		
070	16241-2214-4	BOLT,CONNECTING ROD	8		
080	16292-2231-0	METAL,CRANKPIN	4		STD/SET
080	16292-2297-2	METAL,CRANKPIN	4		-0.20mm/SET
080	16292-2298-2	METAL,CRANKPIN	4		-0.40mm/SET
090	16871-2301-5	COMP,CRANKSHAFT	1		
100	---	BLANK	-		
110	---	BLANK	-		
120	1A055-2411-0	GEAR,CRANKSHAFT	1		
130	16271-9523-0	KEY	1		
140	16241-3563-0	GEAR,OIL PUMP DRIVE	1		
150	16241-2328-0	SLEEVE,CRANKSHAFT	1		
160	16241-2325-0	COLLAR,CRANKSHAFT	1		
170	04814-10280	RING	1		
180	16292-2347-4	METAL,CRANKSHAFT	1		STD
180	16292-2391-4	METAL,CRANKSHAFT	1		-0.20mm
180	16292-2392-4	METAL,CRANKSHAFT	1		-0.40mm
190	16292-2348-3	METAL,CRANKSHAFT	3		STD/SET
190	16292-2393-3	METAL,CRANKSHAFT	3		-0.20mm/SET
190	16292-2394-3	METAL,CRANKSHAFT	3		-0.40mm/SET
200	16292-2349-4	METAL,CRANKSHAFT	1		STD/SET
200	16292-2386-4	METAL,CRANKSHAFT	1		-0.20mm/SET
200	16292-2387-4	METAL,CRANKSHAFT	1		-0.40mm/SET

↔ Interchangeable; ≠ not Interchangeable; ← new for old; → old for new

010200 PISTON AND CRANKSHAFT

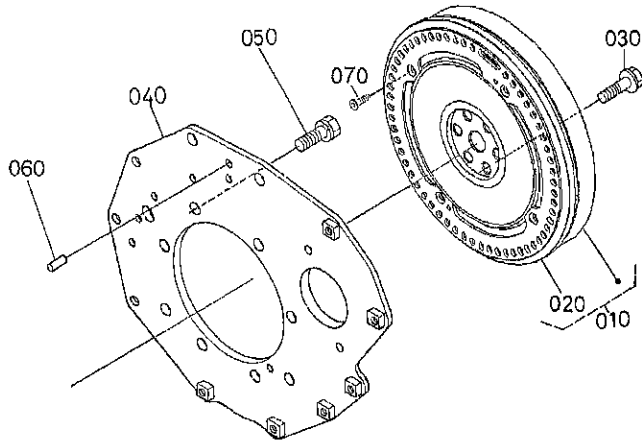


A:WG1605-L-E3-PBS-1

REF.No	PART No.	PART NAME	QTY/S.No.	I.C.	REMARKS
			A		
210	15521-2353-3	METAL,SIDE	2		STD
210	15521-2395-3	METAL,SIDE	2		+0.20mm
210	15521-2396-3	METAL,SIDE	2		+0.40mm
220	19202-2354-3	METAL,SIDE	2		STD
220	19202-2397-3	METAL,SIDE	2		+0.20mm
220	19202-2398-3	METAL,SIDE	2		+0.40mm

↔ Interchangeable; ≠ not Interchangeable; ← new for old; → old for new

010300 FLYWHEEL



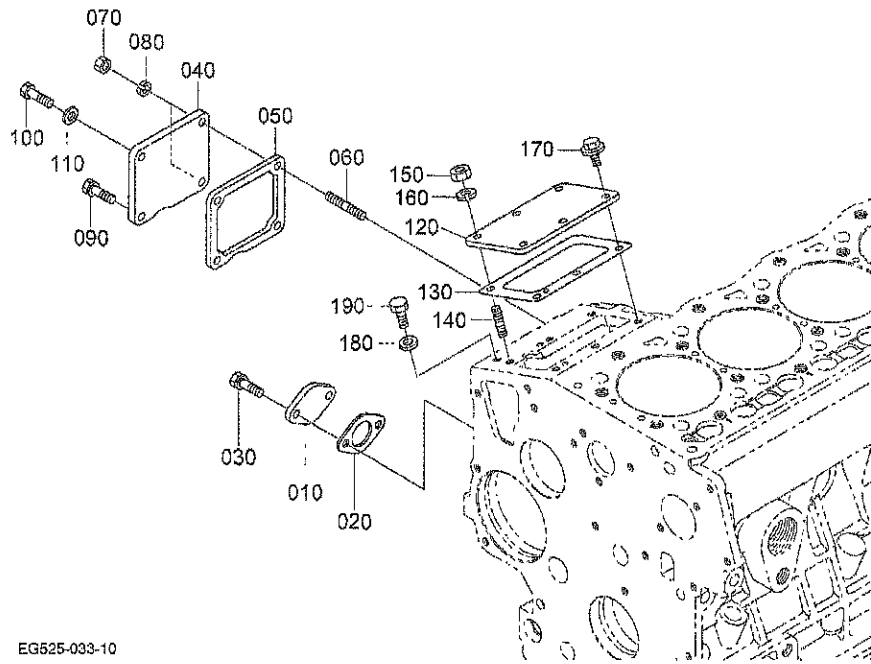
EG525-007-10

A:WG1605-L-E3-PBS-1

REF.No.	PART No.	PART NAME	Q'TY/S.No.	I.C.	REMARKS
010	EG523-2501-0	COMP.FLYWHEEL	A 1		
020	1G081-6382-0	GEAR,RING	1		
030	16241-2516-0	BOLT,FLYWHEEL	6		
040	EG522-0462-0	PLATE,REAR END	1		
050	15261-9119-0	BOLT	8		
060	05012-00512	PIN,STRAIGHT	2		
070	03016-50616	SCREW,FLAT HEAD(PHIL)	4		

↔ Interchangeable; ≠ not interchangeable; ← new for old; → old for new

020500 COVER



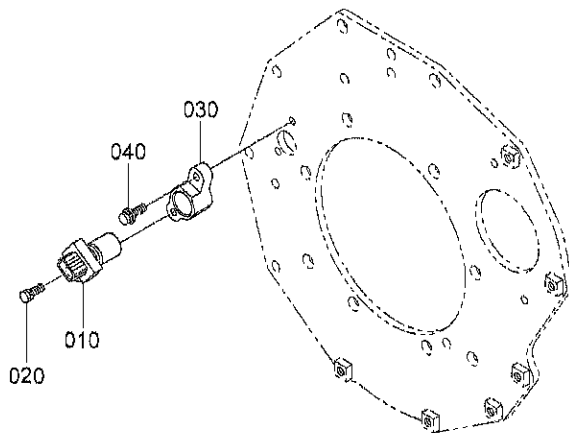
EG525-033-10

A.WG1605-L-E3-PBS-1

REF.No.	PART No.	PART NAME	QTY/S.No.	I.C.	REMARKS
			A		
010	16241-5625-3	COVER,FORK LEV.SHAFT	1		
020	16299-5626-0	GASKET	1		
030	01023-50612	BOLT,SEMS	2		
040	15668-5711-0	COVER	1		
050	16264-5721-0	GASKET	1		
060	16245-9154-0	STUD	2		
070	02056-50060	HEX.NUT	2		
080	04512-60060	WASHER, SPRING	2		
090	01023-50612	BOLT,SEMS	1		
100	01053-50612	HEX.BOLT	1		
110	15601-9665-0	GASKET	1		
120	EG523-0193-0	COVER,INJECTION PUMP	1		
130	16040-5209-2	SHIM,INJECTION	1	0.200mm	
140	15841-9150-0	STUD	3		
150	02014-50060	HEX.NUT	3		
160	04512-50060	WASHER, SPRING LOCK	3		
170	01754-50612	BOLT,FLANGE	3		
180	15601-9665-0	GASKET	1		
190	15661-9601-0	PLUG	1		

↔ Interchangeable; ≠ not interchangeable; ← new for old; → old for new

026000 SENSOR(ENGINE)



EG526-015-10

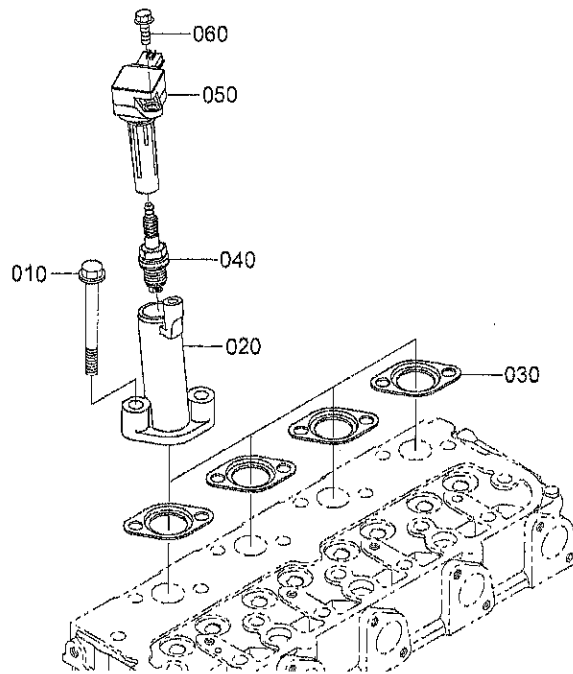
A:WG1605-L-E3-PBS-1

REF.No	PART No.	PART NAME	QTY/S.No.	I.C.	REMARKS
			A		
010	E9121-6833-2	ASSY SENSOR,STICK	1		
020	01754-50630	BOLT,FLANGE	1		
030	EG523-5285-0	HOLDER(SENSOR)	1		
040	01754-50616	BOLT,FLANGE	1		

↔ Interchangeable; ≠ not Interchangeable; ← new for old; → old for new

030200 IGNITION COIL

EG525-016-10

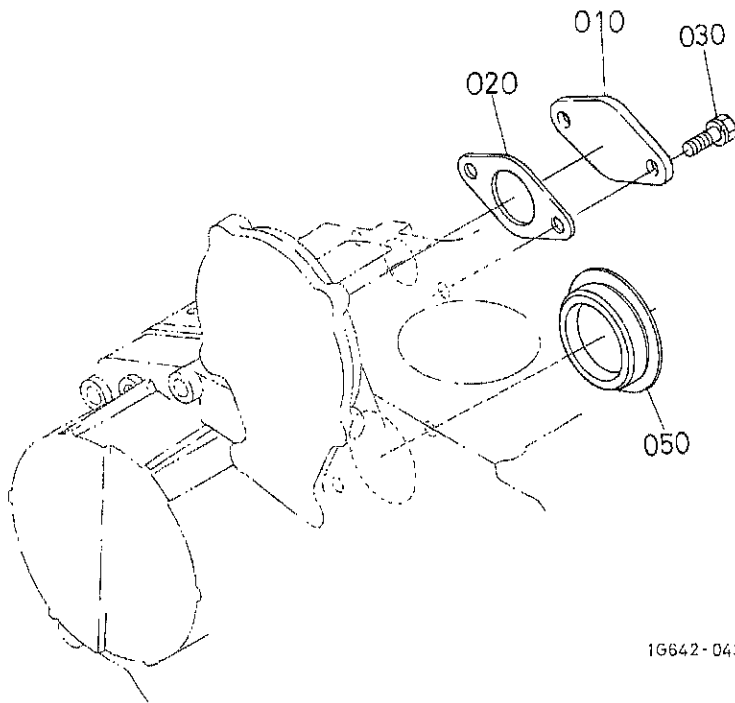


A:WG1605-L-E3-PBS-1

REF.No.	PART No.	PART NAME	QTY/S.No.	I.C.	REMARKS
			A		
010	EG523-0345-0	BOLT,CYLINDER HEAD	8		
020	EG523-6793-0	FLANGE,IGCOIL	4		
030	EG523-6799-0	GASKET(FLANGE)	4		
040	EG523-6771-0	SPARK PLUG	4		
050	EG523-6709-0	COIL,(IGNITION)	4		
060	01754-50616	BOLT,FLANGE	4		

↔ Interchangeable; ≠ not Interchangeable; ← new for old; → old for new

030800 SOLENOID COVER AND HYDRAULIC PUMP COVER



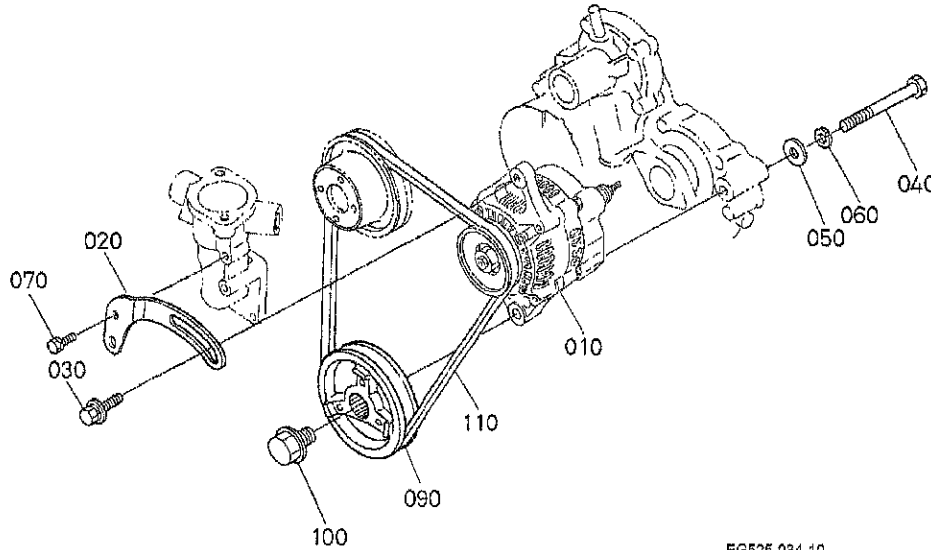
16642-043-10

A:WG1605-L-E3-PBS-1

REF.No.	PART No.	PART NAME	QTY/S.No.	I.C.	REMARKS
			A		
010	16231-6011-0	COVER,SOLENOID	1		
020	16299-6015-0	GASKET	1		
030	01023-50616	BOLT,SEMS	2		
040	---	BLANK			
050	16264-8315-3	COVER,HYDRAULIC PUMP	1		

↔ Interchangeable; ≠ not interchangeable; ← new for old; → old for new

040200 ALTERNATOR AND PULLEY



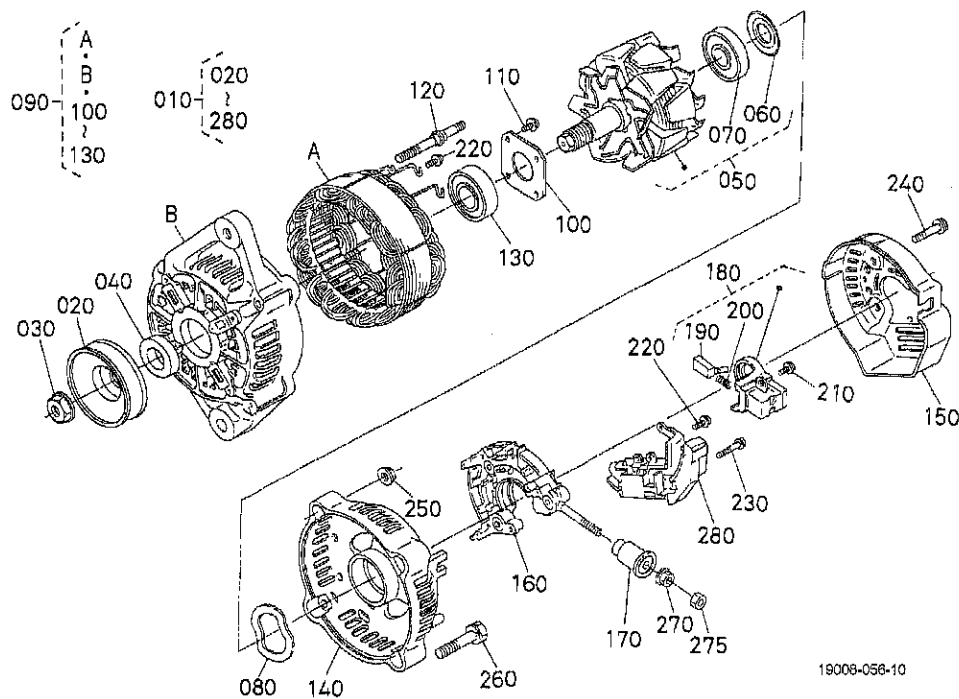
EG525-004-10

A:WG1605-L-E3-PBS-1

REF.No.	PART No.	PART NAME	QTY/S.No.	I.C.	REMARKS
			A		
010	16678-6401-2	ASSY ALTERNATOR	1		
020	16241-6442-2	STAY,DYNAMO	1		
030	01127-50830	BOLT,W SEMS(LARGE WA	1		
040	01173-51085	HEX.BOLT	1		
050	04011-50100	WASHER,PLAIN	1		
060	04512-50100	WASHER,SPRING LOCK	1		
070	01023-50616	BOLT,SEMS	1		
080	---	BLANK	1		
090	16249-7428-0	PULLEY,FAN DRIVE	1		
100	16241-9102-0	BOLT,FAN DRIVE	1		
110	1E299-9701-0	FAN BELT	1		

↔ Interchangeable; ≠ not Interchangeable; ← new for old; → old for new

040300 ALTERNATOR [COMPONENT PARTS]

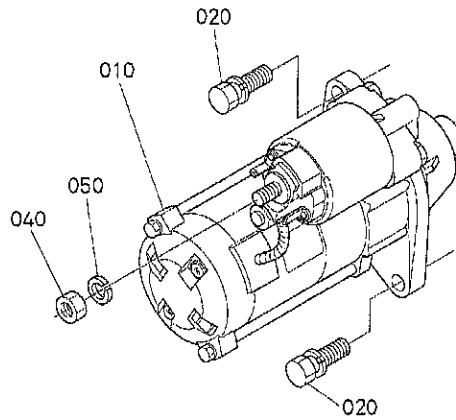


A:WG1605-L-E3-PBS-1

REF.No.	PART No.	PART NAME	QTY/S.No.	I.C.	REMARKS
			A		
010	16678-6401-2	ASSY ALTERNATOR	1		
020	15881-6411-0	PULLEY,DYNAMO	1		
030	15881-9201-0	NUT	1		
040	15881-6415-0	COLLAR	1		
050	66436-6404-0	ROTOR	1		
060	15881-6480-0	COVER,BEARING	1		
070	16652-6477-0	BEARING,BALL	1		
080	15881-6481-0	WASHER,THRUST	1		
090	66436-6402-0	ASSY FRAME,DRIVE END	1		
100	15881-6471-0	PLATE,RETAINER	1		
110	15881-9301-0	SCREW,ROUND HEAD	4		
120	15881-6426-0	BOLT,THROUGH	2		
130	16652-6478-0	BEARING,BALL	1		
140	16678-6406-0	FRAME,END	1		
150	16678-6423-0	COVER,END	1		
160	15881-6485-0	ASSY RECTIFIER	1		
170	15881-6490-0	BUSH,INSULATION	1		
180	16652-6431-0	HOLDER,BRUSH	1		
190	15881-6409-0	BRUSH	2		
200	15881-6433-0	SPRING,BRUSH	2		
210	15881-9302-0	SCREW,ROUND HEAD	2		
220	15881-9303-0	SCREW,ROUND HEAD	6		
230	15881-9304-0	SCREW,ROUND HEAD	1		
240	15881-9104-0	BOLT	3		
250	15881-9202-0	NUT	2		
260	15881-9105-0	BOLT	2		
270	14182-9203-0	NUT	1		
275	02014-50060	HEX,NUT	1		
280	16652-6460-0	ASSY REGULATOR	1		

↔ Interchangeable; ≠ not Interchangeable; ← new for old; → old for new

040400 STARTER



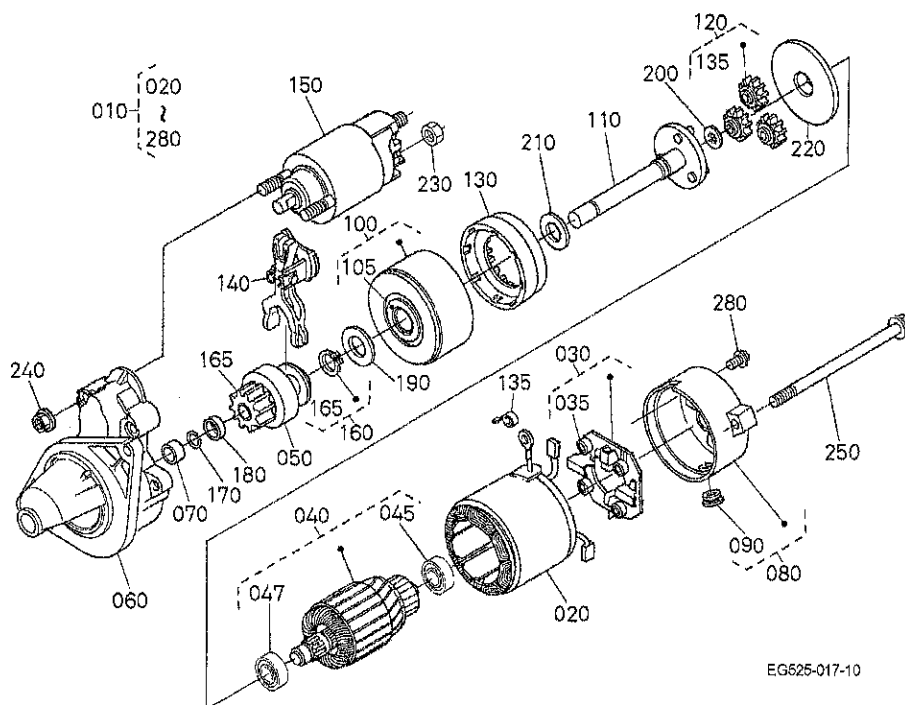
EG525-003-10

A:WG1605-L-E3-PBS-1

REF.No.	PART No.	PART NAME	Q'TY/S.No.	I.C.	REMARKS
			A		
010	EG523-6301-0	ASSY STARTER	1		
020	01123-50830	BOLT,SEMS	2		
030	---	BLANK	-		
040	02114-50080	HEX,NUT	1		
050	04512-50080	WASHER,SPRING LOCK	1		

↔ Interchangeable; ≠ not Interchangeable; ← new for old; → old for new

040500 STARTER [COMPONENT PARTS]



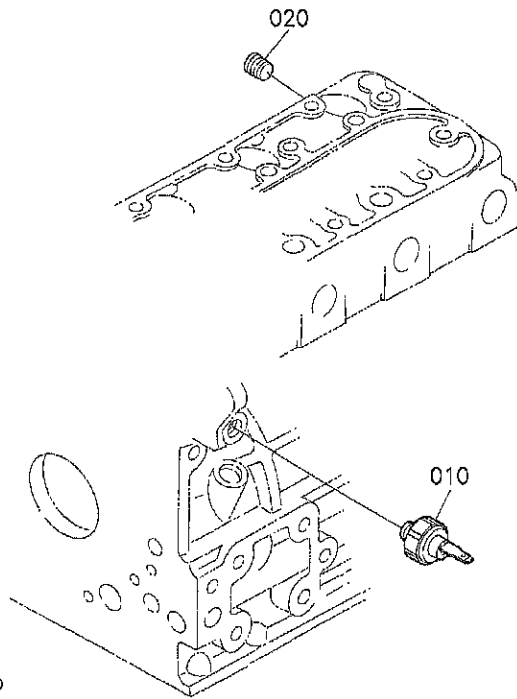
EG625-017-10

A:WG1605-L-E3-PBS-1

REF.No	PART No.	PART NAME	QTY/S.No.	I.C.	REMARKS
			A		
010	EG523-6301-0	ASSY STARTER	1		
020	6A100-3116-0	ASSY YOKE, STARTER	1		
030	14958-6338-0	ASSY HOLDER	1		
035	14958-6348-0	SPRING, BRUSH	4		
040	6A100-3117-0	ASSY ARMATURE	1		
045	15504-6353-0	BEARING, BALL	1		
047	15504-6350-0	BEARING, BALL	1		
050	K3511-8143-0	ASSY CLUTCH, STARTER	1		
060	EG523-3118-0	ASSY HOUSING, STARTER	1		
070	6A100-3119-0	BEARING	1		
080	EG515-6345-0	ASSY FRAME	1		
090	12182-6329-0	COVER	1		
100	14958-6353-0	ASSY BEARING	1		
105	14958-6306-0	BEARING	1		
110	K3511-8146-0	ASSY SHAFT, STARTER	1		
120	14958-6326-0	GEAR	3		
130	14958-6327-0	GEAR	1		
135	15401-6339-0	SPRING, BRUSH	4		
140	14958-6305-0	LEVER	1		
150	EG371-6308-0	SWITCH, MAGNETIC	1		
160	14958-6317-0	RING, SNAP	1		
165	17311-6328-0	GEAR, PINION	1		
170	12181-6322-0	RING, SNAP	1		
180	13816-6346-0	COLLAR	1		
190	14958-9401-0	WASHER, PLAIN	1		
200	14958-9402-0	WASHER, PLAIN	1		
210	14958-9403-0	WASHER, PLAIN	1		
220	14958-9404-0	PLATE	1		
230	16611-9202-0	NUT	1		
240	14278-9201-0	NUT	2		

↔ Interchangeable; ≠ not interchangeable; ← new for old; → old for new

040600 OIL SWITCH/THERMOMETER/PLUG

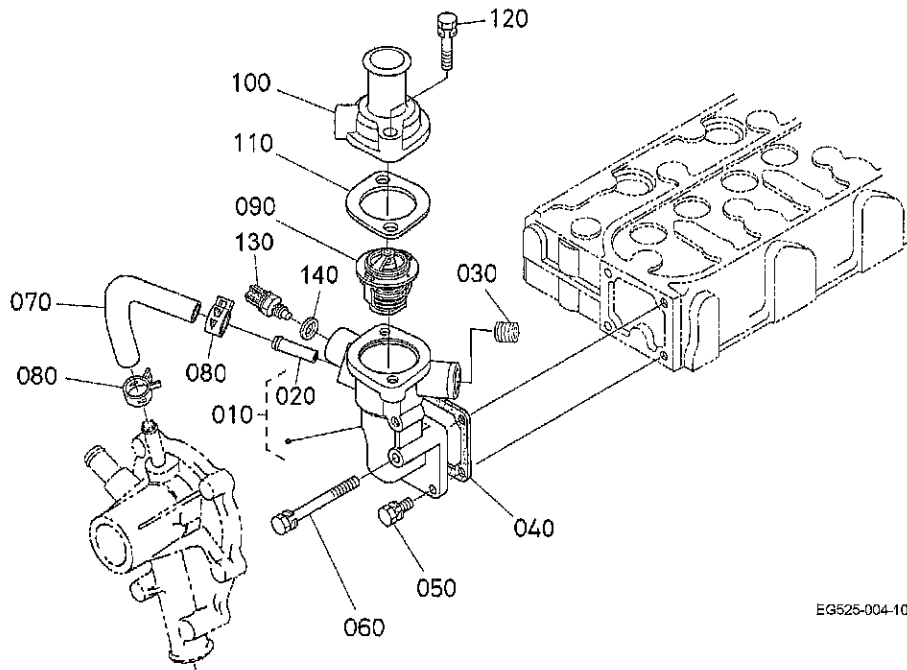


A:WG1605-L-E3-PBS-1

REF.No.	PART No.	PART NAME	QTY/S.No.	I.C.	REMARKS
			A		
010	1A024-3901-0	SWITCH,OIL	1		
020	15841-9602-0	PLUG	1		

↔ Interchangeable; ≠ not Interchangeable; ← new for old; → old for new

050000 WATER FLANGE AND THERMOSTAT

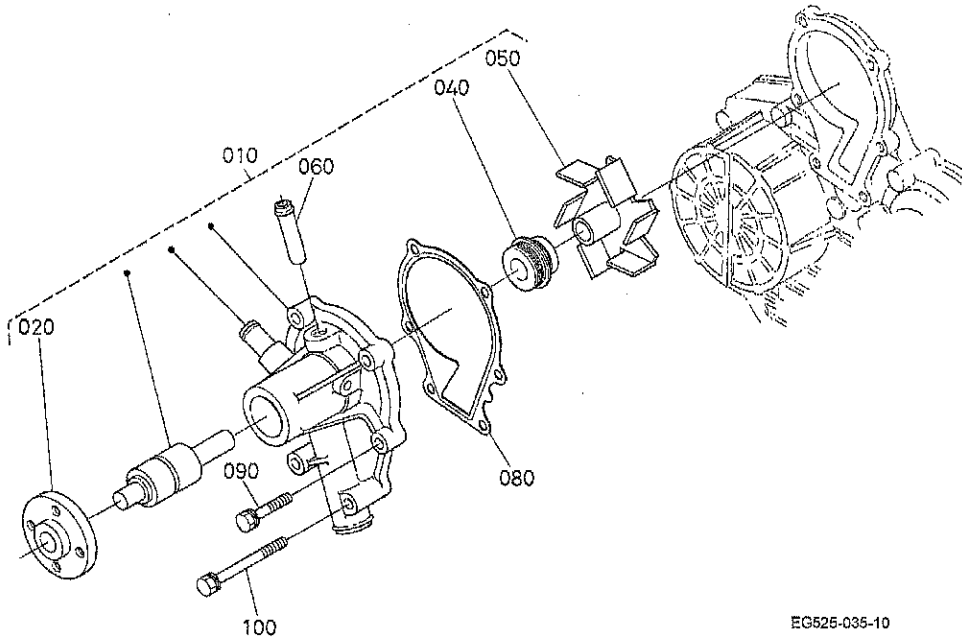


A:WG1605-L-E3-PBS-1

REF.No.	PART No.	PART NAME	QTY/S.No.	I.C.	REMARKS
			A		
010	16394-7270-0	COMP.FLANGE,WATER	1		
020	16241-7337-0	PIPE,WATER RETURN	1		
030	1A021-9602-0	PLUG	1		
040	16264-7292-0	GASKET,WATER FLANGE	1		
050	01023-50616	BOLT,SEMS	3		
060	01023-50655	BOLT,SEMS	1		
070	16241-7335-0	PIPE,WATER RETURN	1		
080	16687-7336-2	CLAMP,HOSE	2		
090	19434-7301-4	ASSY THERMOSTAT	1		
100	16219-7326-0	COVER,THERMOSTAT	1		
110	16221-7327-0	GASKET,THERMOSTAT	1		
120	01123-50835	BOLT,SEMS	2		
130	5H601-4194-0	SENSOR,WATER TEMP.	1		
140	04717-01200	WASHER,SEAL	1		

↔ Interchangeable; ≠ not Interchangeable; ← new for old; → old for new

050100 WATER PUMP

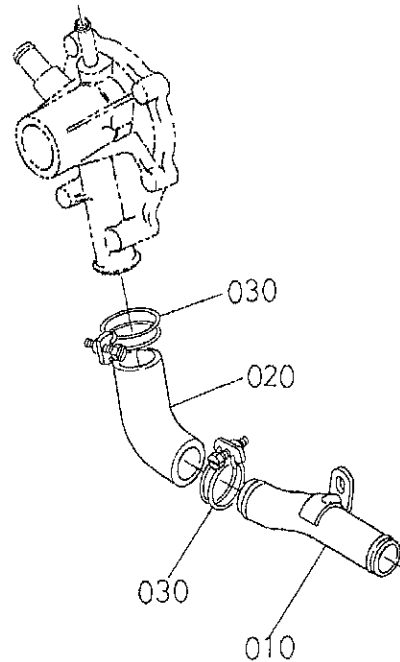


A:WG1605-L-E3-PBS-1

REF.No.	PART No.	PART NAME	Q'TY/S.No.	I.C.	REMARKS
			A		
010	EG523-7303-0	ASSY PUMP,WATER	1		
020	16259-7352-0	FLANGE,WATER PUMP	1		
030	---	BLANK	-		
040	16642-7305-0	ASSY SEAL,MECHANICAL	1		
050	16259-7351-2	IMPELLER,WATER PUMP	1		
060	15852-7334-0	PIPE,WATER RETURN	1		
070	---	BLANK	-		
080	16239-7343-0	GASKET,WATER PUMP	1		
090	01023-50630	BOLT,SEMS	4		
100	01023-50685	BOLT,SEMS	2		

↔ Interchangeable; ≠ not interchangeable; ← new for old; → old for new

050300 WATER PIPE



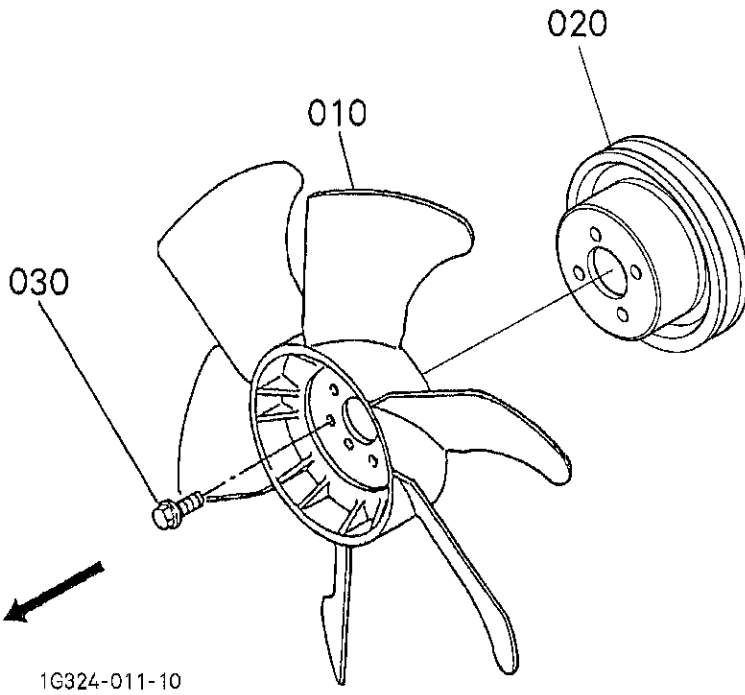
EG525-006-10

A:WG1605-L-E3-PBS-1

REF.No.	PART No.	PART NAME	QTY/S.No.	I.C.	REMARKS
			A		
010	17203-7286-0	PIPE, WATER	1		
020	16680-7287-0	PIPE, WATER	1		
030	16677-7296-0	CLAMP, HOSE	2		

↔ Interchangeable; ≠ not interchangeable; ← new for old; → old for new

050400 COOLER FAN

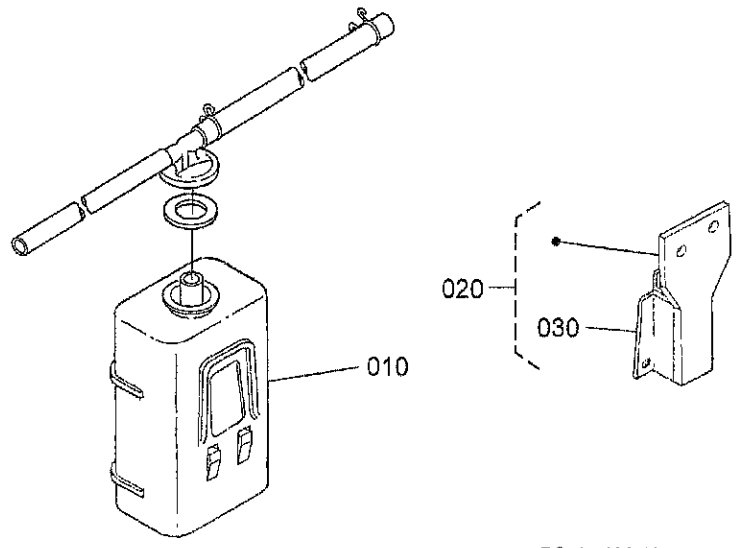


A:WG1605-L-E3-PBS-1

REF.No.	PART No.	PART NAME	QTY/S.No.	I.C.	REMARKS
			A		
010	17218-7411-0	FAN	1		
020	16217-7425-0	PULLEY,FAN	1		
030	01754-50610	BOLT,FLANGE	4		

↔ Interchangeable; ≠ not Interchangeable; ← new for old; → old for new

050500 RESERVE TANK



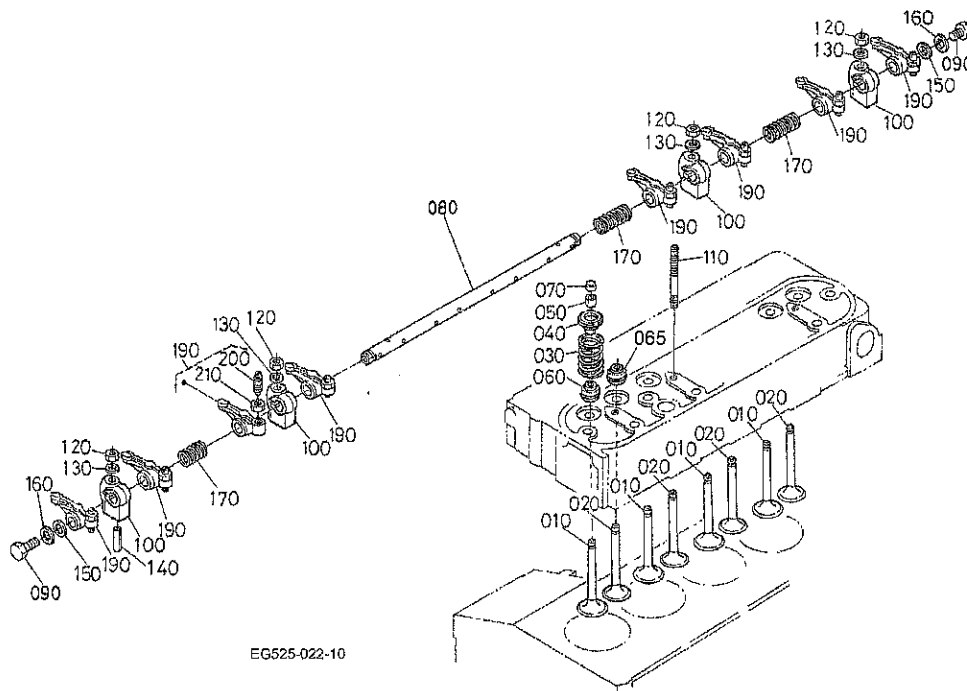
EG525-036-10

A:WG1605-L-E3-PBS-1

REF.No.	PART No.	PART NAME	QTY/S.No.	I.C.	REMARKS
			A		
010	48100-5847-4	ASSY TANK,RESERVE	1		
020	19449-7250-2	COMP SUPPORT,TANK	1		
030	19217-7246-0	STAY,RESERVE TANK	1		

↔ Interchangeable; ≠ not interchangeable; ← new for old; → old for new

060000 VALVE AND ROCKER ARM



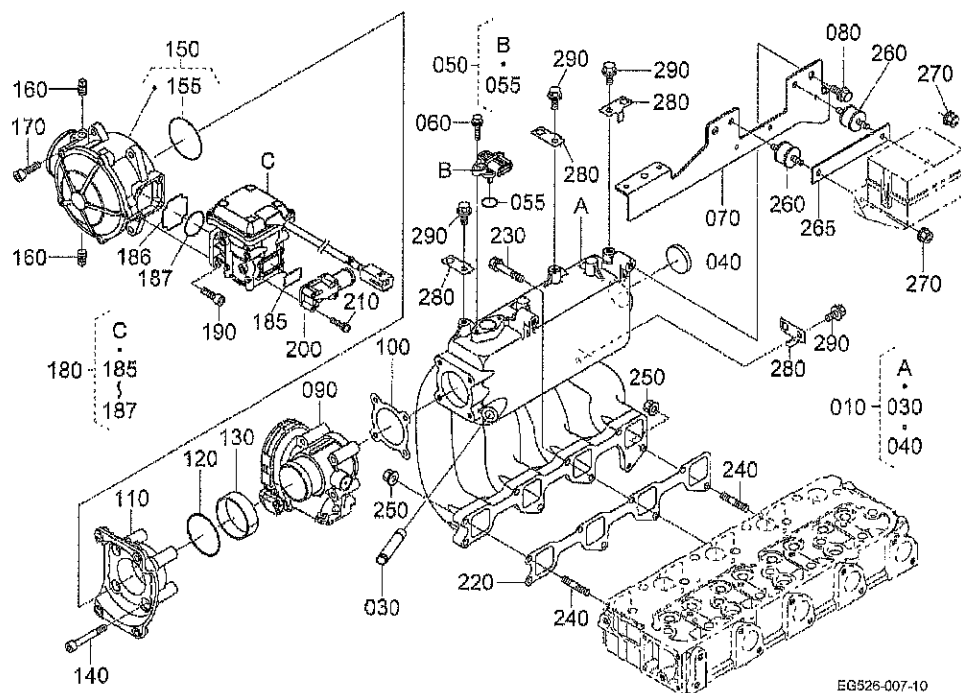
EG525-022-10

A:WG1605-L-E3-PBS-1

REF.No.	PART No.	PART NAME	QTY/S.No.	I.C.	REMARKS
			A		
010	EG523-1311-0	VALVE, INLET	4		
020	EG523-1312-0	VALVE, EXHAUST	4		
030	15261-1324-0	SPRING, VALVE	8		
040	16261-1333-0	RETAINER, SPRING	8		
050	15261-1336-0	COLLET, VALVE SPRING	8	SET	
060	10010-1315-0	SEAL, VALVE STEM	4		
065	EG523-1315-0	SEAL, VALVE STEM	4		
070	16241-1328-0	CAP, VALVE	8		
080	16241-1426-6	SHAFT, ROCKER ARM	1		
090	01754-50610	BOLT, FLANGE	2		
100	16241-1435-0	BRACKET, ROCKER ARM	4		
110	16241-1441-0	STUD	4		
120	15261-9201-0	NUT	4		
130	15261-9401-0	WASHER, PLAIN	4		
140	05411-00428	PIN, SPRING	1		
150	16241-1443-0	WASHER, R-ARM, SHAFT	2		
160	15841-9402-2	WASHER, PLAIN	2		
170	16241-1431-0	SPRING, ROCKER ARM	3		
180		BLANK			
190	16241-1403-2	ASSY ROCKER ARM	8		
200	16241-1423-0	SCREW, ADJUSTING	8		
210	16241-1424-0	NUT	8		

↔ Interchangeable; ≠ not Interchangeable; ← new for old; → old for new

060100 INLET MANIFOLD



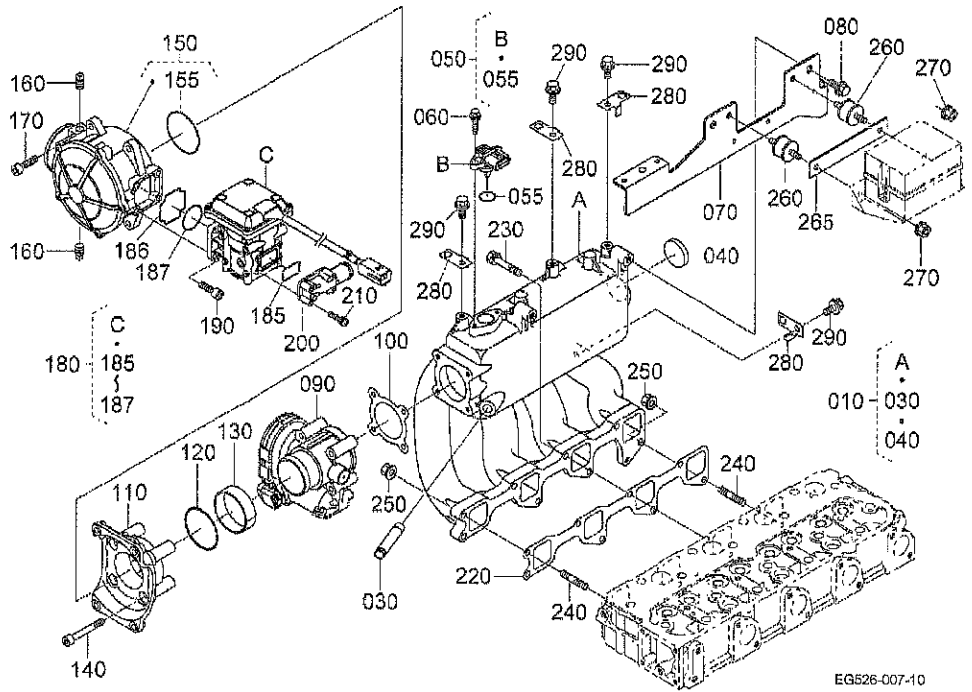
EG526-007-10

A:WG1605-L-E3-PBS-1

REF.No	PART No.	PART NAME	QTY/S.No.	I.C.	REMARKS
			A		
010	EG523-1181-2	MANIFOLD,COMP(INLET)	1		
020	---	BLANK	---		
030	EG523-0555-0	JOINT(BREATHER TUBE)	1		
040	15221-0349-0	CAP,SEALING	1		
050	EG523-4480-0	SENSOR(TMAP)	1		
055	EG523-9677-0	O RING	1		
060	EG523-9106-0	BOLT,FLANGE	2		
070	EG523-6520-0	BRACKET	1		
080	01754-50816	BOLT,FLANGE	2		
090	EG523-4400-0	BODY,THROTTLE,COMP	1		
100	EG523-4611-0	GASKET(THROTTLE)	1		
110	EG523-4491-0	ADAPTER	1		
120	EG523-4492-0	O RING	1		
130	EG523-4493-0	SPACER	1		
140	16394-9104-2	BOLT,HEX-SOC-HD	4		
150	EG523-4401-0	MIXER,ASSY	1		
155	EG523-4699-0	RUBBER,SEALING(MIXER)	1		
160	19202-9604-0	PLUG	2		
170	01311-10625	BOLT,SOCKET HEAD	4		
180	EG523-4694-0	REGULATOR,ASSY(DEPR)	1		
185	EG523-4696-0	RUBBER,SEALING(D-EPR,1)	1		
186	EG523-4697-0	RUBBER,SEALING(D-EPR,2)	1		
187	EG523-4698-0	RUBBER,SEALING(D-EPR,3)	1		
190	01350-10516	BOLT,SOCKET HEAD	4		
200	EG523-4494-0	FLANGE(INLET)	1		
210	03024-50425	SCREW,SEMS(PAN HEAD)	4		
220	EG523-1182-0	GASKET(INLET)	1		
230	01023-50625	BOLT,SEMS	6		
240	01513-50625	BOLT,STUD	2		
250	02751-50060	NUT,FLANGE	2		

← Interchangeable; ≠ not Interchangeable; ← new for old; → old for new

060100 INLET MANIFOLD

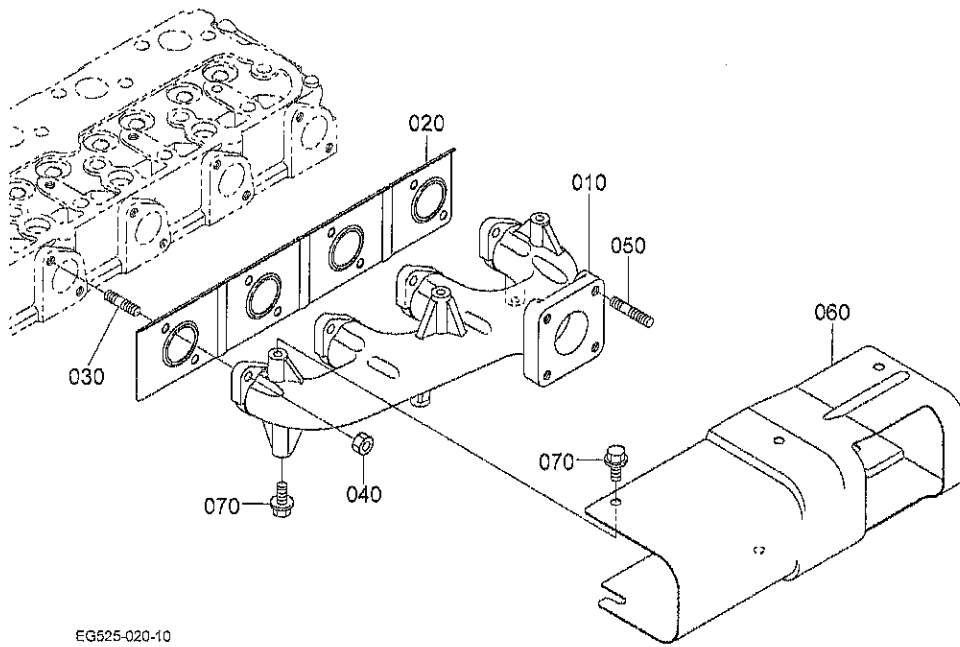


A:WG1605-L-E3-PBS-1

REF.No	PART No.	PART NAME	Q'TY/S.No.	I.C.	REMARKS
			A		
260	EG523-7219-0	RUBBER	2		
265	EG523-6522-1	PLATE(FUSE BOX)	1		
270	02751-50060	NUT,FLANGE	2		
280	EG523-6517-0	BRACKET(HARNESS 1)	4		
290	01754-50612	BOLT,FLANGE	4		

↔ Interchangeable; ≠ not Interchangeable; ← new for old; → old for new

060200 EXHAUST MANIFOLD



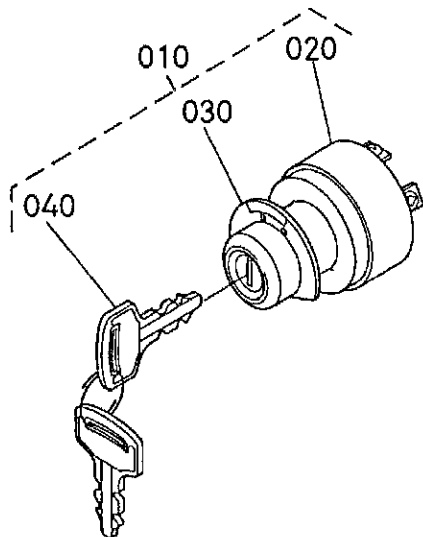
EG525-020-10

A:WG1605-L-E3-PBS-1

REF.No	PART No.	PART NAME	Q'TY/S.No.	I.C.	REMARKS
			A		
010	EG522-1231-0	MANIFOLD, EXHAUST	1		
020	EG523-1235-0	GASKET(EX-MANIFOLD)	1		
030	EG523-9149-0	STUD	8		
040	16271-9201-0	NUT	8		
050	1J500-9155-0	STUD	4		
060	EG522-1734-2	COVER(EXHAUST)	1		
070	01754-50610	BOLT, FLANGE	6		

↔ Interchangeable; ≠ not interchangeable; ← new for old; → old for new

080100 STARTER SWITCH



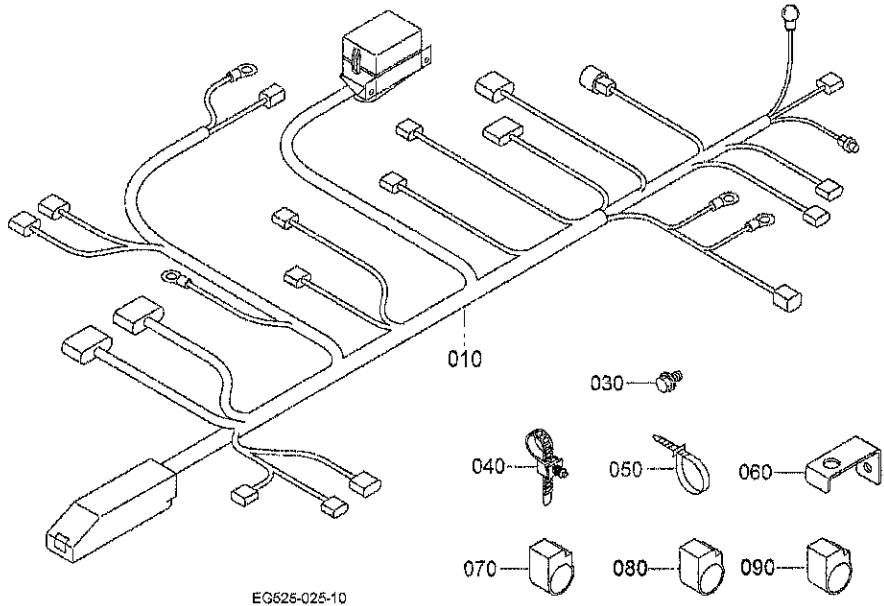
1G646-017-10

A:WG1605-L-E3-PBS-1

REF.No.	PART No.	PART NAME	QTY/S.No.	I.C.	REMARKS
			A		
010	1E013-6359-0	ASSY SWITCH,STARTER	1		
020	RA111-5369-0	SWITCH,STARTER	1		
030	66706-5515-0	LABEL,STARTER SWITCH	1		
040	RC101-5363-0	ASSY KEY,STARTER	1		

↔ Interchangeable; ≠ not interchangeable; ← new for old; → old for new

080601 WIRE HARNESS



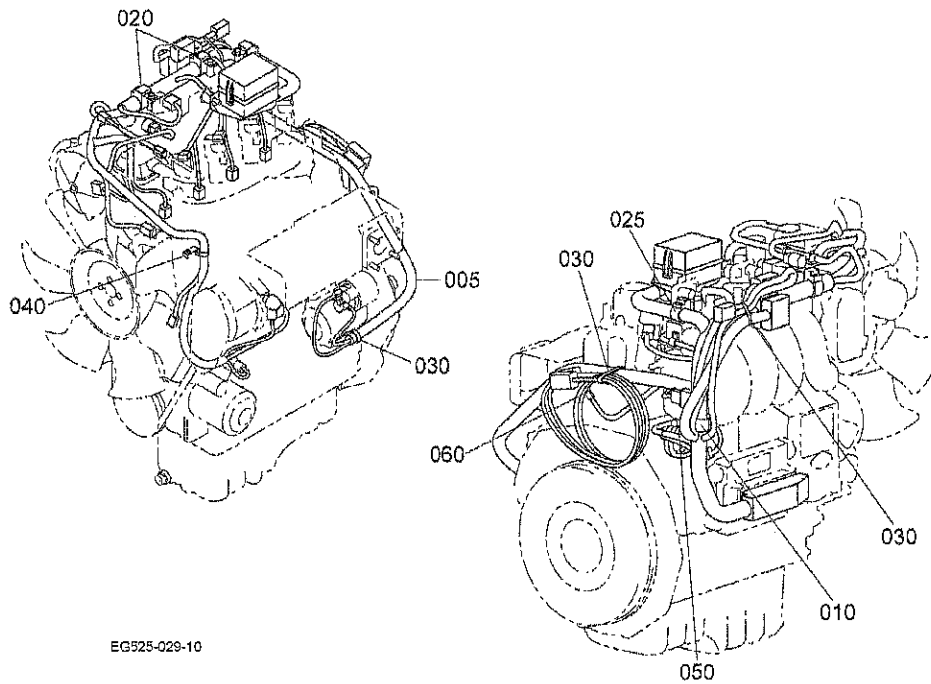
EG625-025-10

A:WG1605-L-E3-PBS-1

REF.No.	PART No.	PART NAME	QTY/S.No.	I.C.	REMARKS
			A		
010	EG523-6505-2	HARNESS,WIRE,ASSY	1		
020	-----	BLANK	-		
030	01754-50812	BOLT,FLANGE	1		
040	RP421-5411-0	CLAMP	1		
050	55311-4126-0	BAND,CORD	3		
060	EG523-6521-0	BRACKET HARNESS	1		
070	RD451-5426-0	CLAMP	1		
080	RD451-5425-0	CLAMP	2		
090	RD451-5424-0	CLAMP	1		

↔ Interchangeable; ≠ not Interchangeable; ← new for old; → old for new

080602 WIRE HARNESS

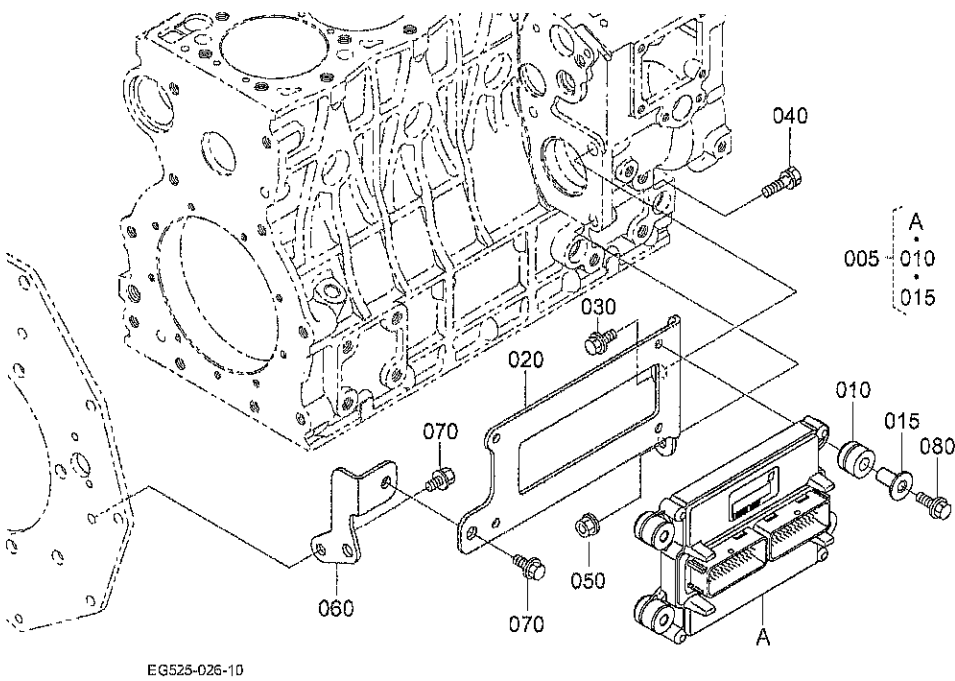


A:WG1605-L-E3-PBS-1

REF.No.	PART No.	PART NAME	QTY/S.No.	I.C.	REMARKS
			A		
005	EG523-6505-2	HARNESS,WIRE,ASSY	1		
010	RD451-5426-0	CLAMP	1		
020	RD451-5425-0	CLAMP	2		
025	RD451-5424-0	CLAMP	1		
030	55311-4126-0	BAND,CORD	3		
040	EG523-6521-0	BRACKET HARNESS	1		
050	RP421-5411-0	CLAMP	1		
060	01754-50812	BOLT,FLANGE	1		

↔ interchangeable; ≠ not interchangeable; ← new for old; → old for new

080700 ECU

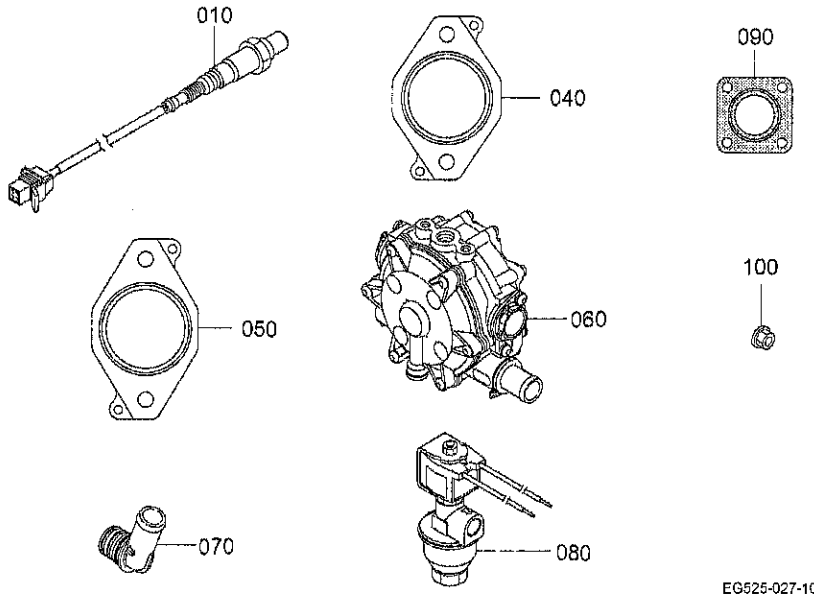


A:WG1605-L-E3-PBS-1

REF.No.	PART No.	PART NAME	Q'TY/S.No.	I.C.	REMARKS
			A		
005	EH016-6020-0	ECU,ASSY	1		
010	EG523-6816-0	RUBBER(CUSHION)	4		
015	EG523-6815-0	SPACER(ECU)	4		
020	EG523-6820-0	STAY(ECM, 1)	1		
030	01774-51020	BOLT,FLANGE	1		
040	01123-50830	BOLT,SEMS	1		
050	02751-50080	NUT,FLANGE	1		
060	EG523-6830-0	STAY(ECM, 2)	1		
070	01754-50812	BOLT,FLANGE	2		
080	01754-50635	BOLT,FLANGE	4		

↔ Interchangeable; ≠ not Interchangeable; ← new for old; → old for new

080800 ACCESSORIES AND SERVICE PARTS



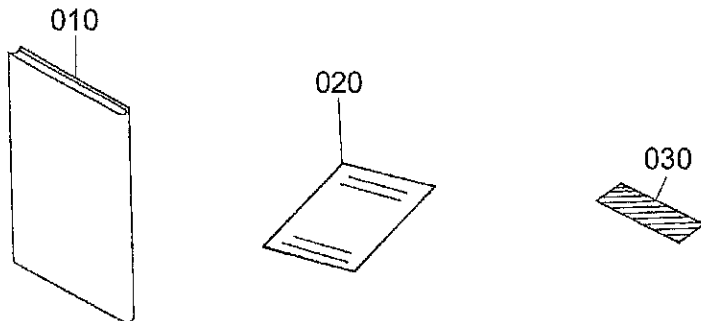
EG525-027-10

A:WG1605-L-E3-PBS-1

REF.No.	PART No.	PART NAME	QTY/S.No.	I.C.	REMARKS
			A		
010	EG523-1224-0	SENSOR(O2)	2		
020	---	BLANK	-		
030	---	BLANK	-		
040	EG523-1237-0	GASKET,MUFFLER	1		
050	EG523-1238-0	GASKET,MUFFLER	1		
060	EG523-4692-0	REGULATOR,ASSY	1		
070	EG525-4693-0	CONNECTOR(VAPORIZER)	2		
080	EG523-4695-0	VALVE(LOCKOFF)	1		
090	EG523-1223-0	GASKET,MUFFLER	1		
100	02756-50080	NUT,UBS	4		

↔ Interchangeable; ≠ not interchangeable; ← new for old; → old for new

080900 LABEL AND OPERATOR'S MANUAL



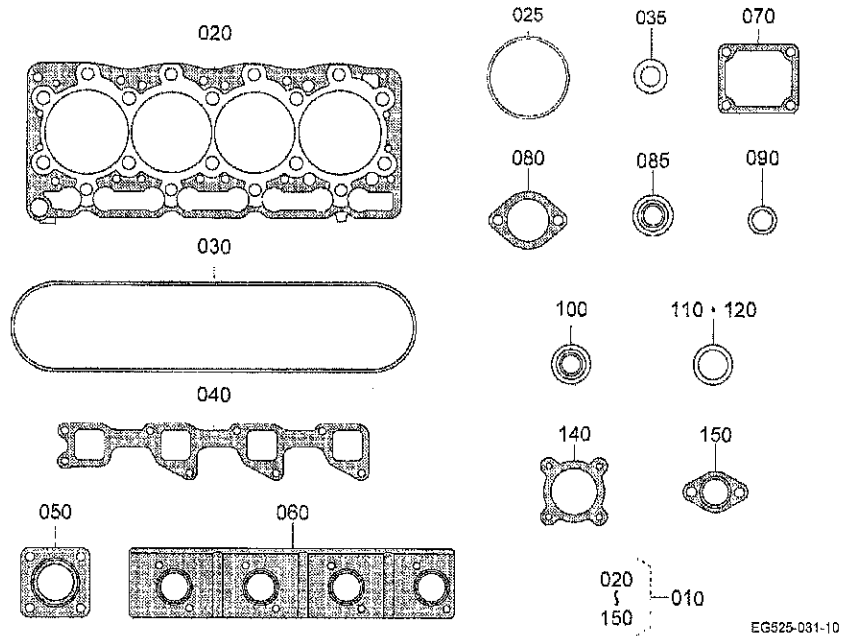
EG525-000-10

A.WG1605-L-E3-PBS-1

REF.No.	PART No.	PART NAME	Q'TY/S.No.	I.C.	REMARKS
			A		
010	EG523-8916-2	MANUAL,OP	1		
020	EG523-8980-2	PAPER(WARRANTY)	1		
030	12599-8822-3	LABEL,CAUTION	1		

↔ Interchangeable; ≠ not Interchangeable; ← new for old; → old for new

090001 UPPER GASKET KIT[OPTION]



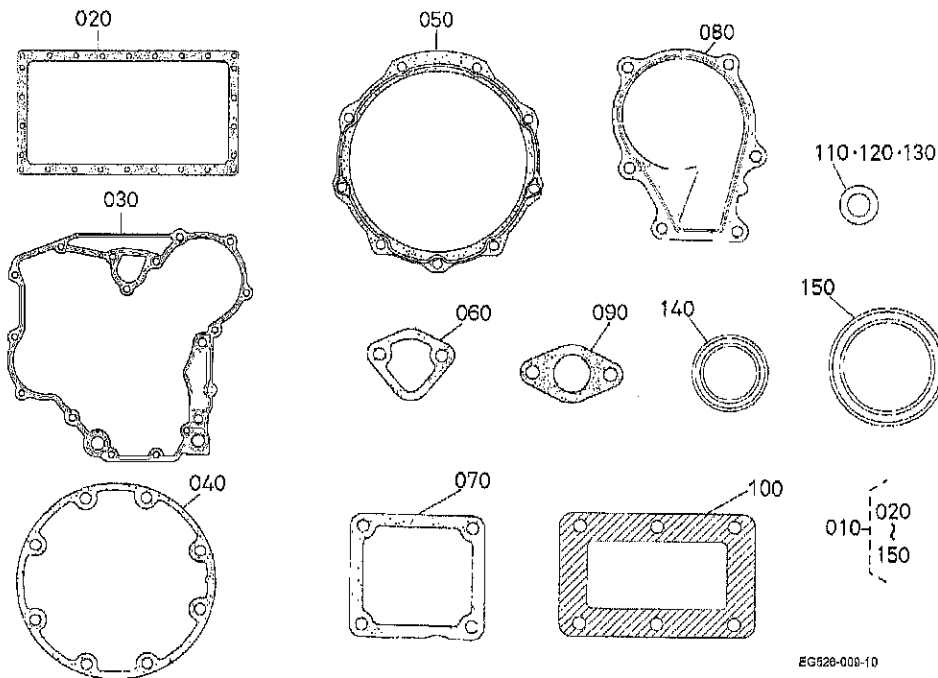
EG525-031-10

A:WG1605-L-E3-PBS-1

REF.No.	PART No.	PART NAME	QTY/S.No.	I.C.	REMARKS
			A		
010	EG523-9935-2	GASKET,KIT(UPPER)	1		
020	16394-0331-3	GASKET,CYLINDER HEAD	1		
025	1A021-0543-0	O RING,BREATHER	2		
030	16241-1452-0	GASKET,HEAD COVER	1		
035	04724-00160	PACKING	1		
040	EG523-1182-0	GASKET(INLET)	1		
050	EG523-1223-0	GASKET,MUFFLER	1		
060	EG523-1235-0	GASKET(EX-MANIFOLD)	1		
070	16264-7292-0	GASKET,WATER FLANGE	1		
080	16221-7327-0	GASKET,THERMOSTAT	1		
085	04717-01200	WASHER,SEAL	1		
090	1J001-9677-0	O RING	1		
100	15951-9666-0	GASKET	4		
110	10010-1315-0	SEAL,VALVE STEM	4		
120	EG523-1315-0	SEAL,VALVE STEM	4		
130	———	BLANK	-		
140	EG523-4611-0	GASKET(THROTTLE)	1		
150	EG523-6799-0	GASKET(FLANGE)	4		

↔ Interchangeable; ≠ not interchangeable; ← new for old; → old for new

090002 LOWER GASKET KIT[OPTION]

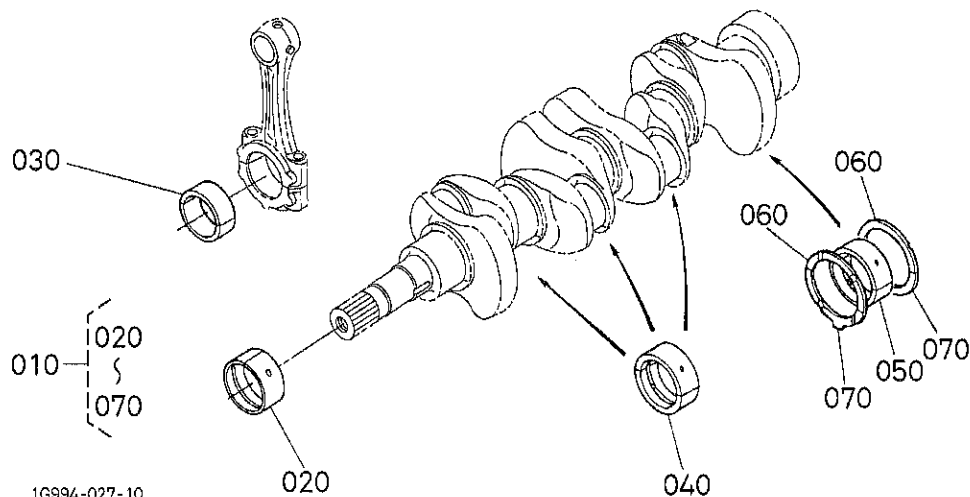


A:WG1605-L-E3-PBS-1

REF.No.	PART No.	PART NAME	QTY/S.No.	I.C.	REMARKS
			A		
010	EG523-9936-2	GASKET,KIT(LOWER)	1		
020	16252-0163-0	GASKET,OIL PAN	1		
030	16264-0413-2	GASKET, GEAR CASE	1		
040	16679-0436-0	GASKET, BRG CASE	1		
050	16264-0482-2	GASKET	1		
060	16261-5214-0	GASKET, FUEL PUMP	1		
070	16264-5721-0	GASKET	1		
080	16239-7343-0	GASKET, WATER PUMP	1		
090	16299-5626-0	GASKET	1		
100	16040-5209-2	SHIM, INJECTION	1		
110	15601-9665-0	GASKET	4		
120	6C090-5896-0	GASKET	1		
130	16265-9667-0	GASKET	1		
140	16259-0421-0	SEAL, OIL	1		
150	16285-0446-0	SEAL, OIL	1		

↔ Interchangeable; ≠ not interchangeable; ← new for old; → old for new

090100 METAL KIT[OPTION]



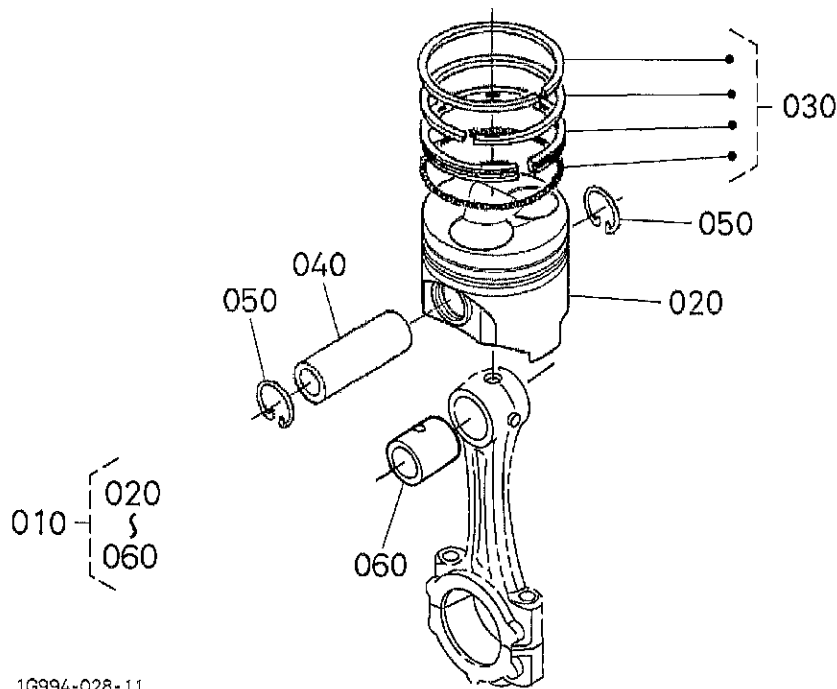
1G994-027-10

A:WG1605-L-E3-PBS-1

REF.No.	PART No.	PART NAME	Q'TY/S.No.	I.C.	REMARKS
			A		
010	1G992-2375-5	KIT METAL,ENGINE	1		STD
010	1G992-2376-5	KIT METAL,ENGINE	1		-0.20mm/+0.20mm
010	1G992-2377-5	KIT METAL,ENGINE	1		-0.40mm/+0.40mm
020	16292-2347-3	METAL,CRANKSHAFT	1		STD
020	16292-2391-3	METAL,CRANKSHAFT	1		-0.20mm
020	16292-2392-3	METAL,CRANKSHAFT	1		-0.40mm
030	16292-2231-0	METAL,CRANKPIN	4		STD/SET
030	16292-2297-2	METAL,CRANKPIN	4		-0.20mm/SET
030	16292-2298-2	METAL,CRANKPIN	4		-0.40mm/SET
040	16292-2348-3	METAL,CRANKSHAFT	3		STD/SET
040	16292-2393-3	METAL,CRANKSHAFT	3		-0.20mm/SET
040	16292-2394-3	METAL,CRANKSHAFT	3		-0.40mm/SET
050	16292-2349-4	METAL,CRANKSHAFT	1		STD/SET
050	16292-2386-4	METAL,CRANKSHAFT	1		-0.20mm/SET
050	16292-2387-4	METAL,CRANKSHAFT	1		-0.40mm/SET
060	15521-2353-3	METAL,SIDE	2		STD
060	15521-2395-3	METAL,SIDE	2		+0.20mm
060	15521-2396-3	METAL,SIDE	2		+0.40mm
070	19202-2354-3	METAL,SIDE	2		STD
070	19202-2397-3	METAL,SIDE	2		+0.20mm
070	19202-2398-3	METAL,SIDE	2		+0.40mm

↔ Interchangeable; ≠ not Interchangeable; ← new for old; → old for new

090300 PISTON KIT[OPTION]

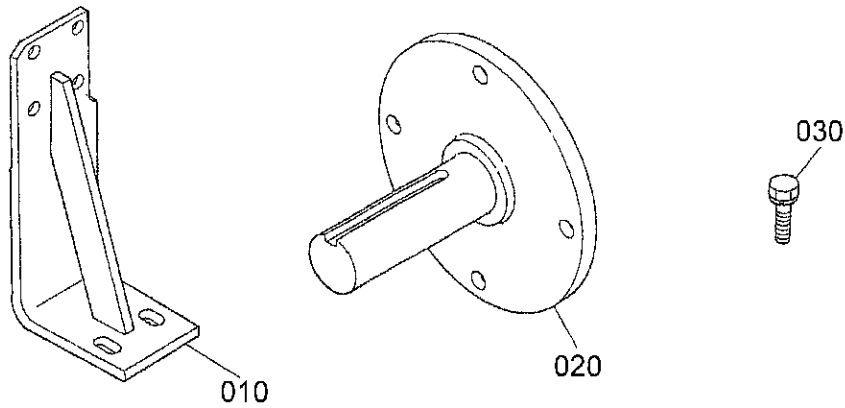


A:WG1605-L-E3-PBS-1

REF.No.	PART No.	PART NAME	Q'TY/S.No.	I.C.	REMARKS
			A		
010	EG523-2177-0	KIT PISTON	4		STD
010	EG523-2179-0	KIT PISTON	4		+0.60mm
020	EG523-2111-0	PISTON	4		STD
020	EG523-2191-0	PISTON	4		+0.50mm
030	EG523-2105-0	ASSY PISTON RING	4		STD
030	EG523-2109-0	ASSY PISTON RING	4		+0.50mm
040	16241-2131-0	PIN,PISTON	4		
050	16241-2133-0	CIR CLIP,PISTON PIN	8		
060	1G700-2198-0	BUSH,PISTON PIN	4		

↔ interchangeable; ≠ not interchangeable; ← new for old; → old for new

090600 OPTION



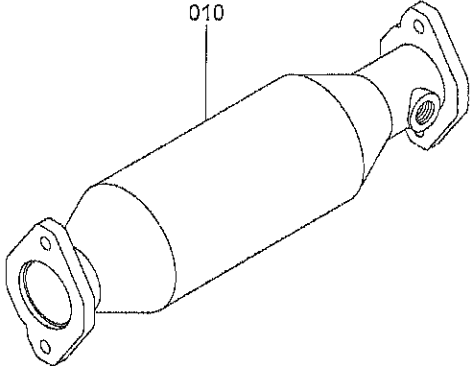
EG525-024-10

A:WG1605-L-E3-PBS-1

REF.No.	PART No.	PART NAME	Q'TY/S.No.	I.C.	REMARKS
			A		
010	16616-0611-2	STAND,ENGINE	4		
020	16616-8451-0	SHAFT,PULLEY	1		
030	01133-51028	BOLT,SEMS	4		

↔ Interchangeable; ≠ not interchangeable; ← new for old; → old for new

091000 LOCAL PARTS



EG525-028-10

A:WG1805-L-E3-PBS-1

REF.No.	PART No.	PART NAME	Q'TY/S.No.	I.C.	REMARKS
			A 1		
010	EG523-1212-2	CONVERTER,COMP			

↔ Interchangeable; ≠ not Interchangeable; ← new for old; → old for new

NUMERICAL INDEX

PART No.	PAGE	REF.No.	PART No.	PAGE	REF.No.	PART No.	PAGE	REF.No.	PART No.	PAGE	REF.No.
6C090-5896-0		39			120						

Kubota®

www.kubota.co.jp